

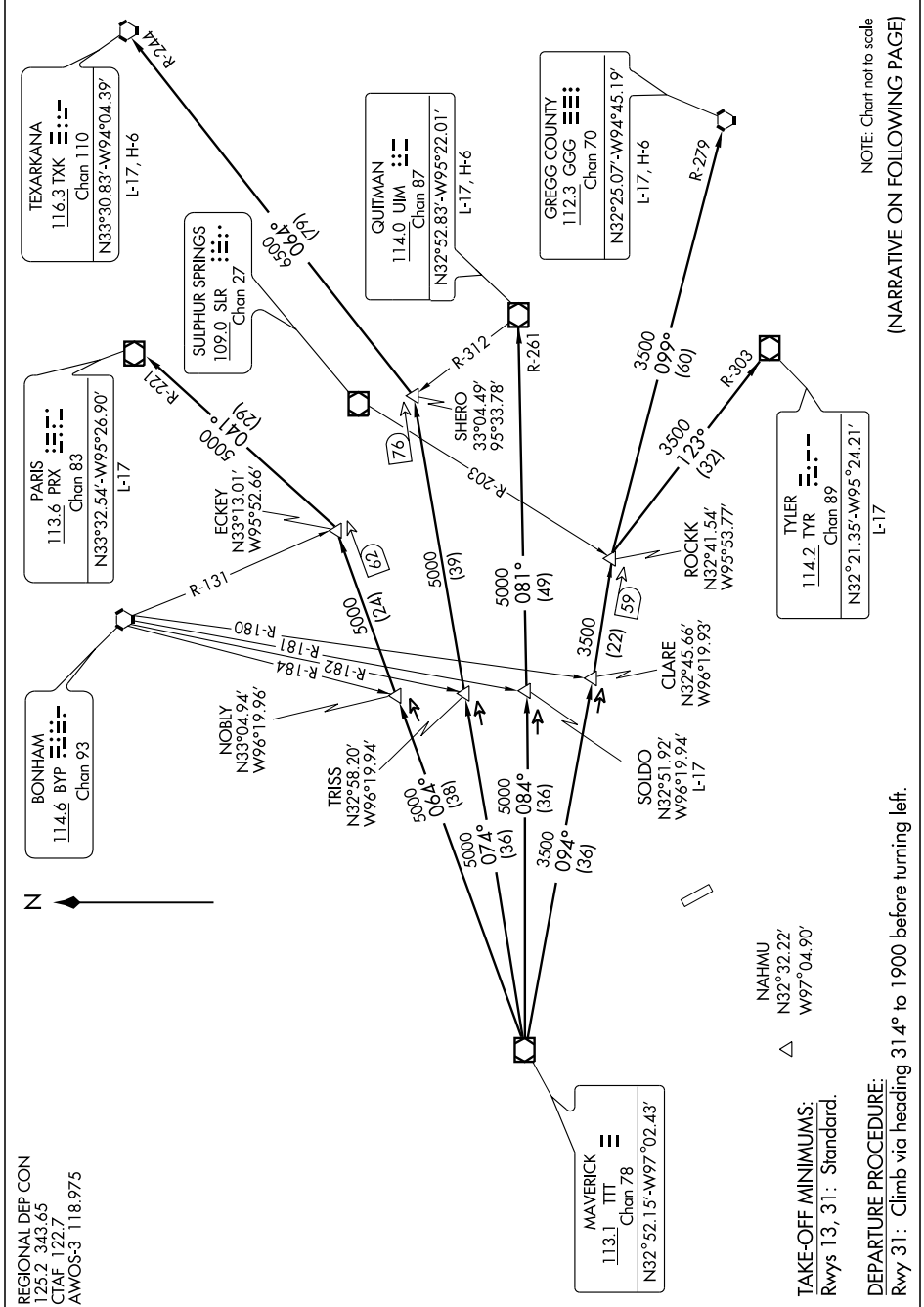
HUBBARD SIX DEPARTURE

SL-5936 (FAA)

LANCASTER (LNC)

LANCASTER, TEXAS

SC-2, 22 OCT 2009 to 19 NOV 2009



TAKE-OFF MINIMUMS:
Rwys 13, 31: Standard.

DEPARTURE PROCEDURE:
Rwy 31: Climb via heading 31.4° to 1900 before turning left.

SC-2, 22 OCT 2009 to 19 NOV 2009

HUBBARD SIX DEPARTURE

LANCASTER, TEXAS

LANCASTER (LNC)