

APP CRS	Rwy Idg	5000
275°	TDZE	877
	Apt Elev	882

RNAV (GPS) RWY 27

WEST BRANCH COMMUNITY (Y31)

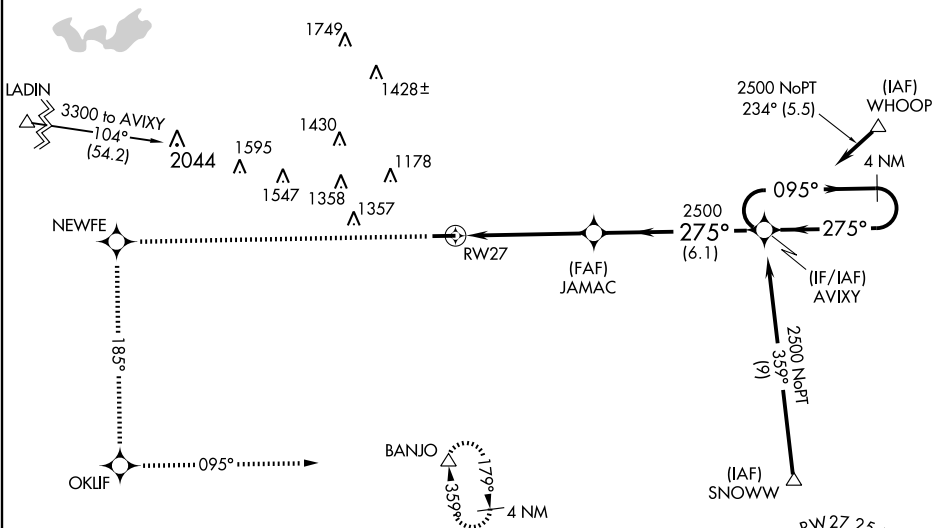
⚠ DME/DME RNP-0.3 NA. Visibility reduction by helicopters NA. When local altimeter setting not received, use Saginaw Intl altimeter setting and increase all MDA 140 feet, increase LNAV visibility Cat C/D ¼ mile and Circling Cat C/D visibility ½ mile.

MISSED APPROACH: Climb to 4000 direct NEWFE and via track 185° to OKLIF and via track 095° to BANJO and hold.

MINNEAPOLIS CENTER
118.525 251.15

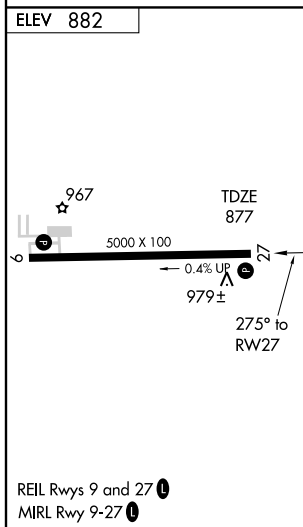
UNICOM
122.8 (CTAF) 0

Procedure NA for arrivals at LADIN via V133 Northwest bound.



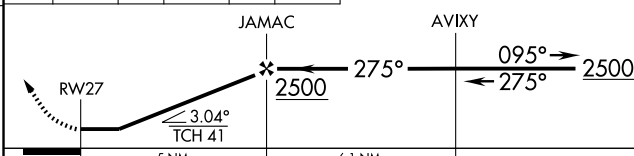
EC-1, 22 OCT 2009 to 19 NOV 2009

EC-1, 22 OCT 2009 to 19 NOV 2009



4000	NEWFE	OKLIF	BANJO
↑	◆	◆	△
	TRK 185°	TRK 095°	

4 NM Holding Pattern



CATEGORY	A	B	C	D
LNAV MDA	1240-1 363 (400-1)		1240-1½ 363 (400-1½)	
CIRCLING	1480-1 598 (600-1)	1480-1½ 598 (600-1½)		1520-2 638 (700-2)