

# RNAV (GPS) RWY 31

ATLANTA/ PEACHTREE CITY-FALCON FIELD (F'F'C)

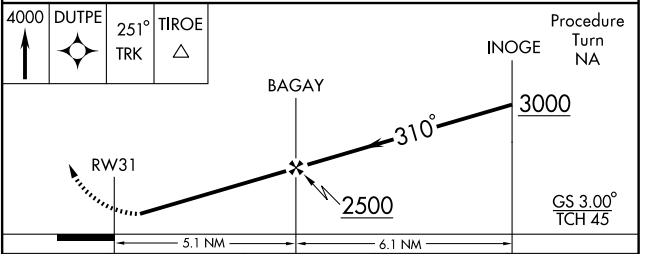
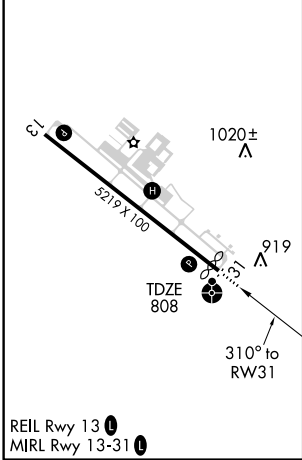
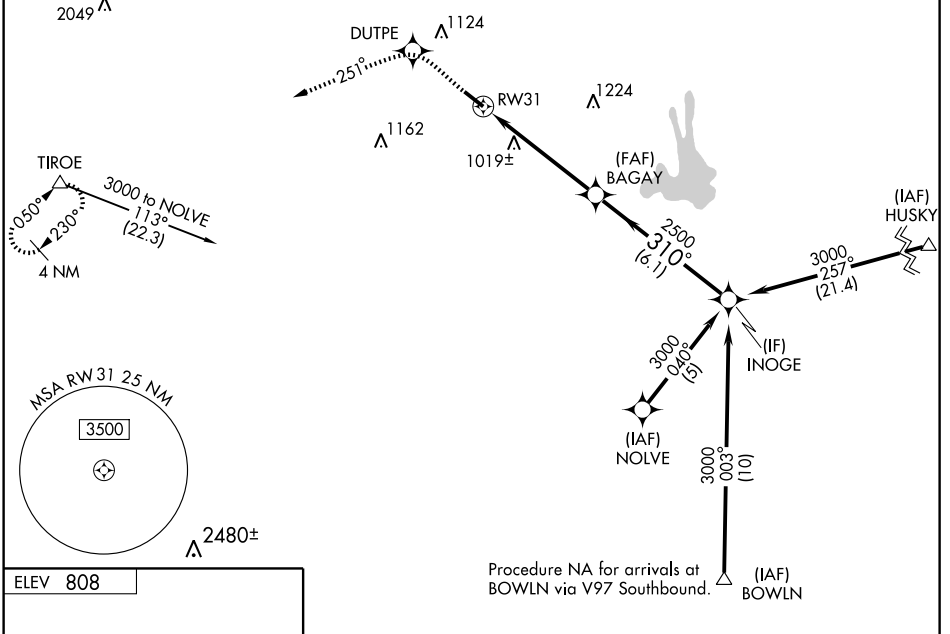
WAAS CH <b>72706</b> <b>W31A</b>	APP CRS <b>310°</b>	Rwy Idg TDZE Apt Elev	<b>5019</b> <b>808</b> <b>808</b>
--	------------------------	-----------------------------	---

**⚠** Inoperative table does not apply. For uncompensated Baro-VNAV systems, LNAV/VNAV NA below -16° C (4° F) or above 47° C (116° F). DME/DME RNP-0.3 NA. Visibility reduction by helicopters NA. Baro-VNAV NA when using Newnan Coweta County altimeter setting. When local altimeter setting not received, use Newnan Coweta County altimeter setting and increase LPV DA to 1176, LNAV/VNAV DA to 1228 and all MDA 60 feet. Increase LNAV/VNAV all Cats. visibility ¼ mile, LNAV Cat. C and D visibility ¼ mile and Circling Cat. D visibility ¼ mile.

**ODALS**

**MISSED APPROACH:**  
Climb to 4000 direct DUTPE and via 251° track to TIROE and hold.

ASOS <b>118.525</b>	ATLANTA APP CON <b>119.8 343.6</b>	CLNC DEL <b>119.8</b>	UNICOM <b>123.05 (CTAF) ①</b>
------------------------	---------------------------------------	--------------------------	----------------------------------



CATEGORY	A	B	C	D
LPV DA	1129-1¼ 321 (400-1¼)			
LNAV/VNAV DA	1181-1¼ 373 (400-1¼)			
LNAV MDA	1280-1	472 (500-1)	1280-1½ 472 (500-1½)	1280-1½ 472 (500-1½)
CIRCLING	1320-1	512 (600-1)	1320-1½ 512 (600-1½)	1440-2 632 (700-2)

SE-4, 22 OCT 2009 to 19 NOV 2009

SE-4, 22 OCT 2009 to 19 NOV 2009