

RNAV (GPS) RWY 13

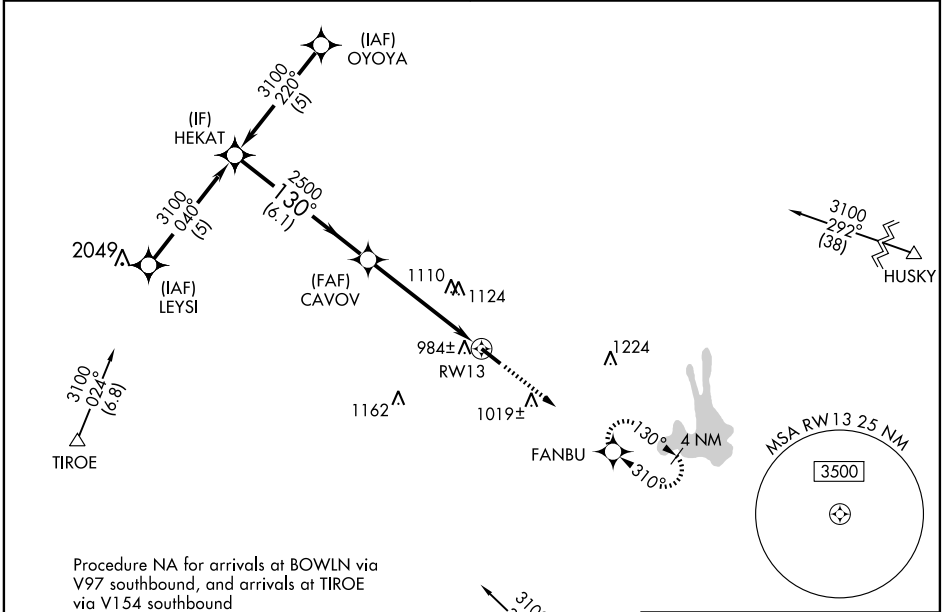
ATLANTA/ PEACHTREE CITY-FALCON FIELD (F'FC)

WAAS CH 61006 W13A	APP CRS 130°	Rwy Idg TDZE Apt Elev	5219 797 808
--	------------------------	-----------------------------	---

For uncompensated Baro-VNAV systems, LNAV/VNAV NA below -16° C (4° F) or above 47° C (116° F). DME/DME RNP-0.3 NA. Baro-VNAV, VDP and LNAV/VNAV DA NA when using Newnan Coweta County altimeter setting. When local altimeter setting not received; use Newnan Coweta County altimeter setting and increase LPV DA to 1094, all MDAs 60 feet and LNAV and circling visibility Cats C and D ¼ mile.

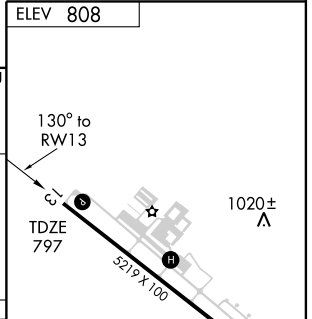
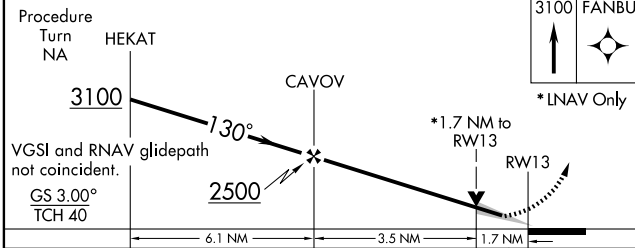
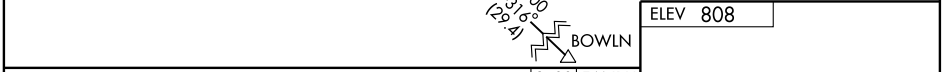
MISSED APPROACH: Climb to 3100 direct FANBU and hold, continue climb-in-hold to 3100.

ASOS 118.525	ATLANTA APP CON 119.8 343.6	CLNC DEL 119.8	UNICOM 123.05 (CTAF) 0
------------------------	---------------------------------------	--------------------------	----------------------------------



SE-4, 22 OCT 2009 to 19 NOV 2009

SE-4, 22 OCT 2009 to 19 NOV 2009



CATEGORY	A	B	C	D
LPV DA	1047-1		250 (300-1)	
LNAV/ VNAV DA	1254-1¾		457 (500-1¾)	
LNAV MDA	1360-1	563 (600-1)	1360-1½ 563 (600-1½)	1360-1¾ 563 (600-1¾)
CIRCLING	1360-1	552 (600-1)	1360-1½ 552 (600-1½)	1580-2½ 772 (800-2½)

REIL Rwy 13 0
MIRL Rwy 13-31 0