

WAAS CH <b>77528</b> <b>W32A</b>	APP CRS <b>322°</b>	Rwy Idg TDZE Apt Elev	<b>5500</b> <b>952</b> <b>970</b>
----------------------------------------	------------------------	-----------------------------	-----------------------------------------

# RNAV (GPS) RWY 32

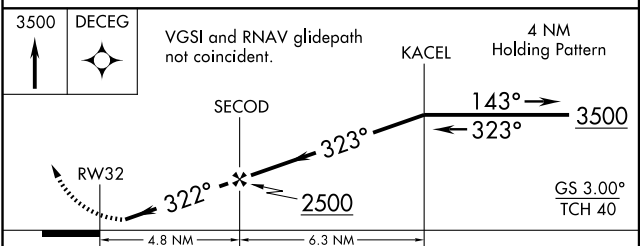
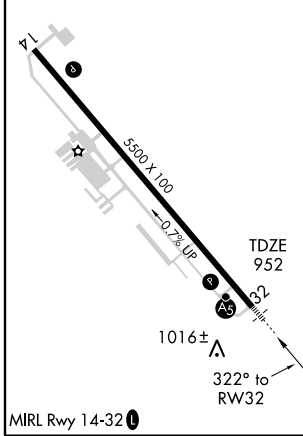
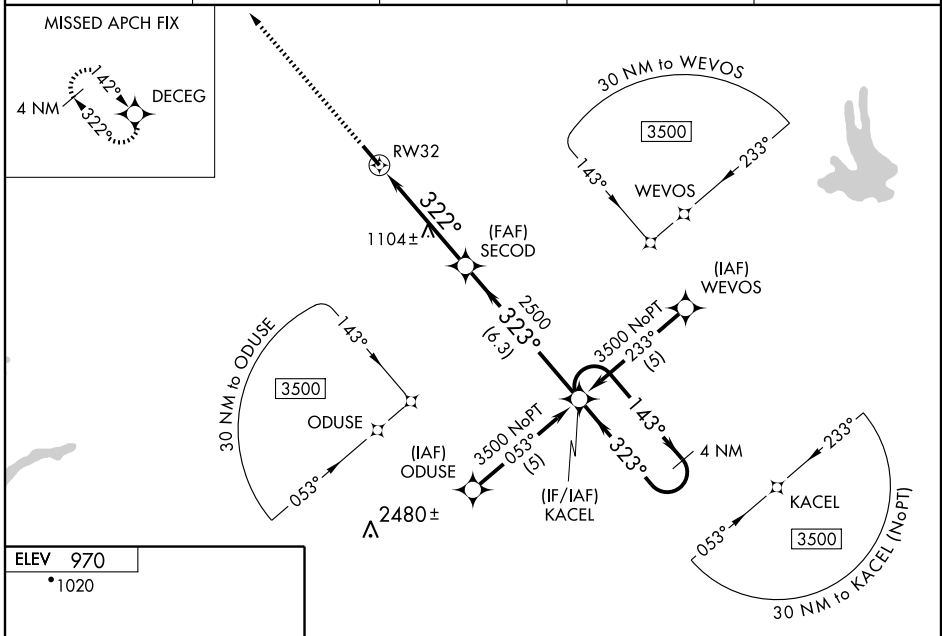
ATLANTA/NEWNAN COWETA COUNTY (CCO)

**⚠** Baro-VNAV NA when using Peachtree City-Falcon field altimeter setting. For uncompensated Baro-VNAV systems, LNAV/VNAV NA below -1.6°C (4°F) or above 46°C (114°F).  
**⚠** DME/DME RNP-0.3 NA. Visibility reduction by helicopters NA. When local altimeter setting not received, use Peachtree City-Falcon field altimeter setting and increase all DA 47 feet and all MDA 60 feet. Inoperative table does not apply to LPV all Cats and LNAV Cats A and B. Inoperative table does not apply to LNAV Cats A and B when using Peachtree City-Falcon field altimeter setting. For inoperative MALSRS, increase LNAV/VNAV all Cats and LNAV Cats C and D visibilities to 1¼ mile. For inoperative MALSRS when using Peachtree City-Falcon field altimeter setting, increase LNAV Cat C visibility to 1¼ mile.

MALSRS

MISSED APPROACH:  
Climb to 3500 direct DECEG and hold.

AWOS-3 <b>118.975</b>	ATLANTA APP CON <b>119.8 343.6</b>	GCO <b>121.725</b>	CLNC DEL <b>119.8</b>	UNICOM <b>122.8 (CTAF) ①</b>
--------------------------	---------------------------------------	-----------------------	--------------------------	---------------------------------



CATEGORY	A	B	C	D
LPV DA		1242-1	290 (300-1)	
LNAV/VNAV DA		1286-1	334 (400-1)	
LNAV MDA		1360-1	408 (400-1)	
CIRCLING	1420-1	450 (500-1)	1420-1½ 450 (500-1½)	1520-2 550 (600-2)

SE-4, 22 OCT 2009 to 19 NOV 2009

SE-4, 22 OCT 2009 to 19 NOV 2009