

WAAS CH 70515 W14A	APP CRS 142°	Rwy Idg TDZE Apt Elev	5500 970 970
--	------------------------	-----------------------------	---

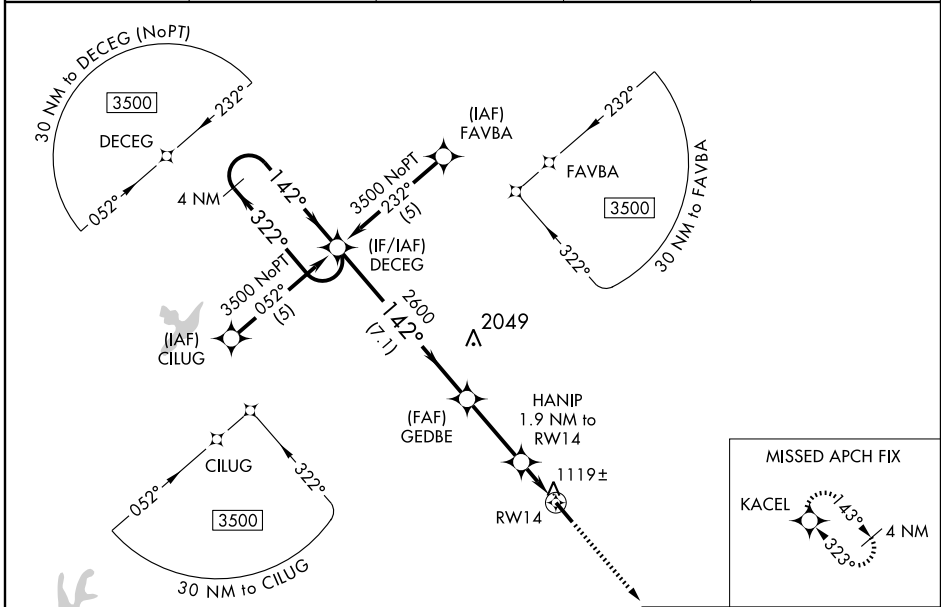
RNAV (GPS) RWY 14

ATLANTA/NEWMAN COWETA COUNTY (CCO)

⚠ Baro-VNAV NA when using Peachtree City-Falcon Field altimeter setting. For uncompensated Baro-VNAV systems, LNAV/VNAV NA below -16°C (4°F) or above 47°C (116°F).
⚠ DME/DME RNP-0.3 NA. Visibility reduction by helicopters NA. When local altimeter setting not received, use Peachtree City-Falcon Field altimeter setting and increase all DA 47 feet and all MDA 60 feet, and increase LPV all Cats and LNAV Cat D visibilities ¼ mile.

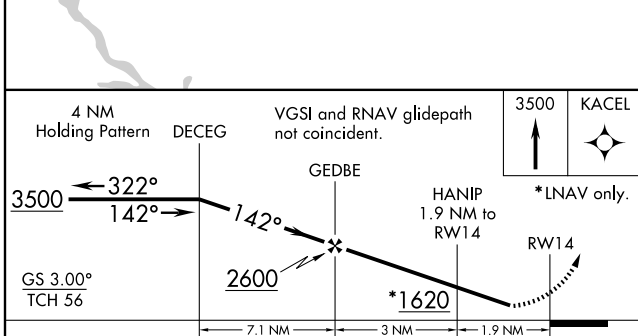
MISSED APPROACH:
Climb to 3500 direct KACEL and hold.

AWOS-3 118.975	ATLANTA APP CON 119.8 343.6	GCO 121.725	CLNC DEL 119.8	UNICOM 122.8 (CTAF) 0
--------------------------	---------------------------------------	-----------------------	--------------------------	---------------------------------



SE-4, 22 OCT 2009 to 19 NOV 2009

SE-4, 22 OCT 2009 to 19 NOV 2009



CATEGORY	A	B	C	D
LPV DA		1300-1	330 (400-1)	
LNAV/VNAV DA		1389-1½	419 (500-1½)	
LNAV MDA	1380-1	410 (500-1)	1380-1¼	410 (500-1¼)
CIRCLING	1420-1	450 (500-1)	1420-1½	1520-2
			450 (500-1½)	550 (600-2)

