

EAST TAWAS, MICHIGAN

AL-5929 (FAA)

VOR or GPS-A

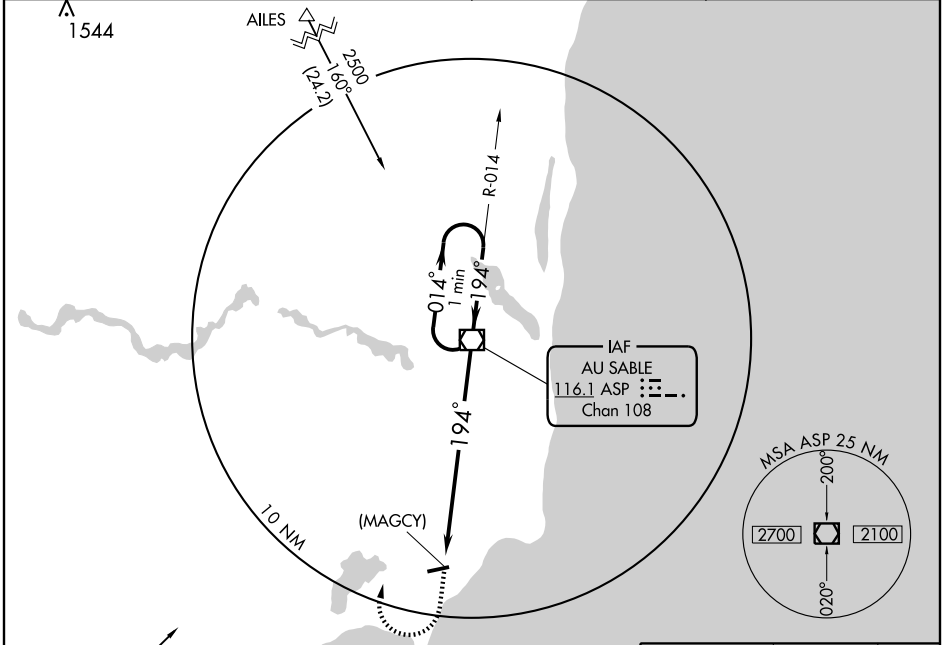
EAST TAWAS/ IOSCO COUNTY (6D9)

VOR/DME ASP 116.1 Chan 108	APP CRS 194°	Rwy Idg TDZE Apt Elev N/A N/A 606
--	------------------------	---

NA Use Oscoda-Wurtsmith altimeter setting.

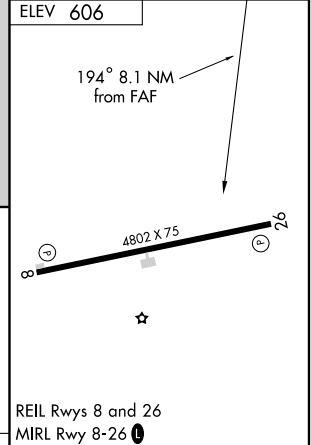
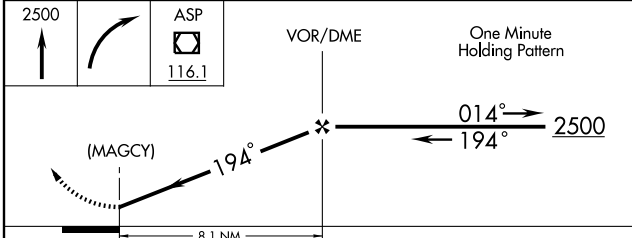
MISSED APPROACH: Climb to 2500 then right turn direct ASP VOR/DME and hold.

OSCODA-WURTSMITH AWOS-3 116.1	MINNEAPOLIS CENTER 118.525 251.15	UNICOM 122.8 (CTAF)	122.85 0
--	---	-------------------------------	------------------------



EC-1, 22 OCT 2009 to 19 NOV 2009

EC-1, 22 OCT 2009 to 19 NOV 2009



CATEGORY	A	B	C	D	FAF to MAP 8.1 NM					
CIRCLING	1120 - 1	514 (600-1)	1120 - 1½ 514 (600-1½)	1280 - 2¼ 674 (700-2¼)	Knots	60	90	120	150	180
					Min:Sec	8:06	5:24	4:03	3:14	2:42

EAST TAWAS, MICHIGAN
Amdt 7 07018

44°19'N - 83°25'W

EAST TAWAS/ IOSCO COUNTY (6D9)

VOR or GPS-A