

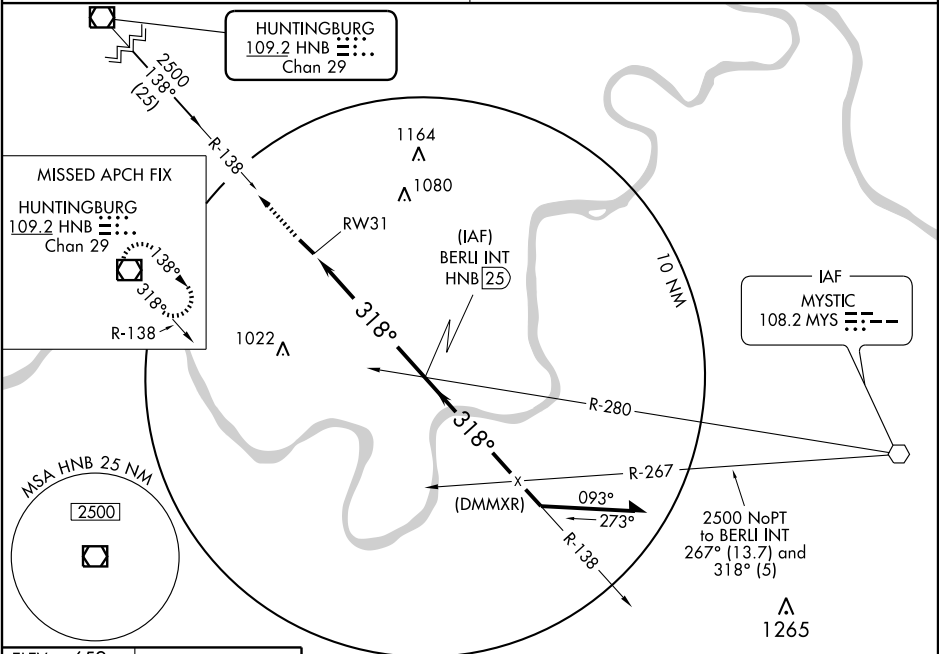
TELL CITY, INDIANA

AL-5928 (FAA)

VOR/DME HNB <b>109.2</b> Chan 29	APP CRS <b>318°</b>	Rwy Idg <b>4400</b> TDZE <b>659</b> Apt Elev <b>659</b>
--	------------------------	---

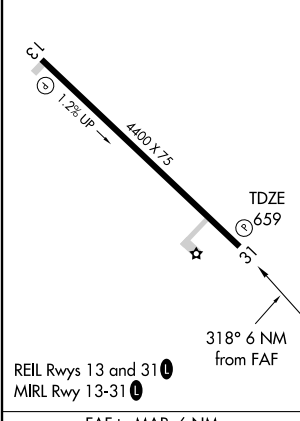
**VOR or GPS RWY 31**  
TELL CITY / PERRY COUNTY MUNI (TEL)

<p>▼ Obtain local altimeter setting on CTAF; when not received, use Evansville altimeter setting.</p> <p>▲ NA</p>	<p>MISSED APPROACH: Climb to 2500 via HNB R-138 to HNB VOR/DME and hold.</p>
<p>EVANSVILLE APP CON *</p> <p><b>126.4 226.4</b></p>	<p>UNICOM</p> <p><b>122.7 (CTAF) 0</b></p>



EC-2, 22 OCT 2009 to 19 NOV 2009

ELEV	659
------	-----



FAF to MAP 6 NM					
Knots	60	90	120	150	180
Min:Sec	6:00	4:00	3:00	2:24	2:00

TELL CITY, INDIANA  
Amdt 5 09295

38°01'N - 86°42'W

TELL CITY / PERRY COUNTY MUNI (TEL)  
**VOR or GPS RWY 31**