

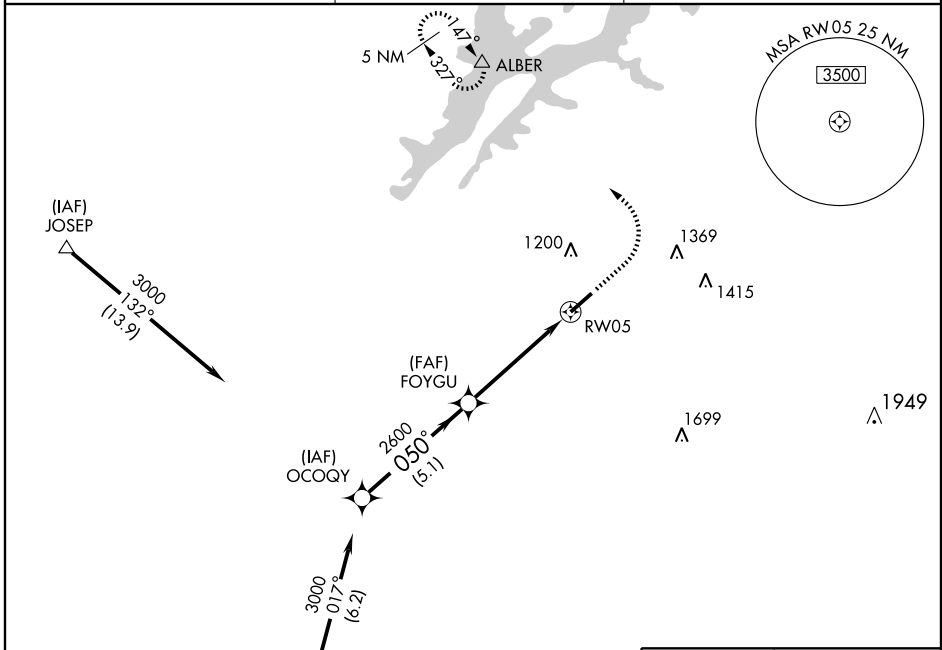
# RNAV (GPS) RWY 5

ALBERTVILLE/ALBERTVILLE RGNL-THOMAS J BRUMLIK FIELD (8A) (M)

APP CRS	Rwy Idg	<b>6114</b>
<b>050°</b>	TDZE	<b>1015</b>
	Apt Elev	<b>1032</b>

▼ Obtain local altimeter setting on CTAF; when not received use Huntsville Intl altimeter setting.  
▲ NA MISSED APPROACH: Climb to 1800 then climbing left turn to 3000 direct ALBER WP and hold.

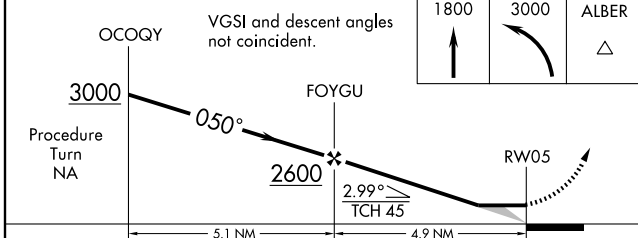
AWOS-3 <b>119.575</b>	BIRMINGHAM APP CON <b>132.15 285.45</b>	UNICOM <b>123.0</b> (CTAF) <b>0</b>
--------------------------	--	--



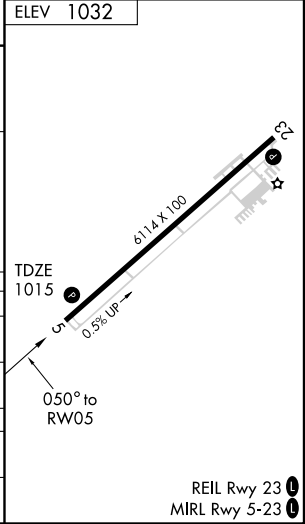
SE-4, 22 OCT 2009 to 19 NOV 2009

SE-4, 22 OCT 2009 to 19 NOV 2009

ELEV 1032
-----------



CATEGORY	A	B	C	D
LNVA MDA	1420-1	405 (400-1)	1420-1¼	405 (400-1¼)
CIRCLING	1480-1 448 (500-1)	1500-1 468 (500-1)	1500-1½ 468 (500-1½)	1600-2 568 (600-2)
HUNTSVILLE INTL ALTIMETER SETTING MINIMUMS				
LNVA MDA	1560-1	545 (600-1)	1560-1½ 545 (600-1½)	1560-1¾ 545 (600-1¾)
CIRCLING	1620-1 588 (600-1)	1640-1 608 (700-1)	1640-1¾ 608 (700-1¾)	1640-2 608 (700-2)



# RNAV (GPS) RWY 5

REIL Rwy 23 **0**  
MIRL Rwy 5-23 **0**