

ALBERTVILLE, ALABAMA

AL-5925 (FAA)

WAAS CH 96604 W23A	APP CRS 230°	Rwy Idg TDZE Apf Elev	6114 1032 1032
--	------------------------	-----------------------------	---

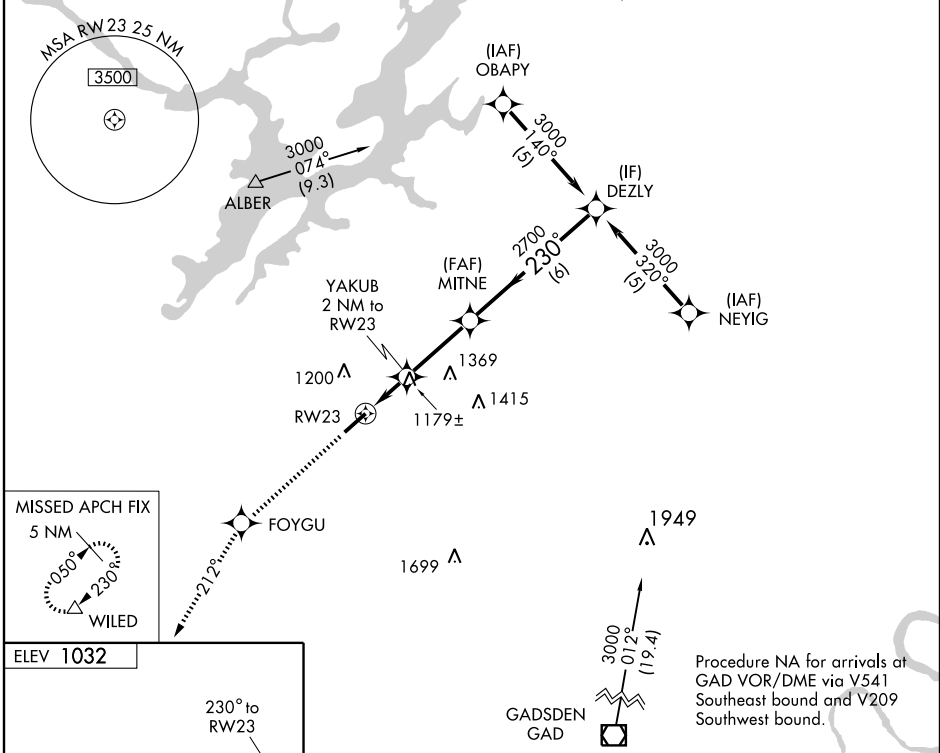
RNAV (GPS) RWY 23

ALBERTVILLE/ALBERTVILLE RGNL-THOMAS J BRUMLIK FIELD (8A) (M)

▼ DME/DME RNP-0.3 NA. Visibility reduction by helicopters NA.
▲ If local altimeter setting not received, use Huntsville Intl altimeter setting and increase all DAs/MDAs 140 feet.

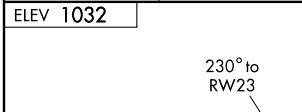
MISSED APPROACH: Climb to 4000 direct FOYGU and via 212° track to WILED and hold.

AWOS-3 119.575	BIRMINGHAM APP CON 132.15 285.45	UNICOM 123.0 (CTAF) 0
--------------------------	--	---------------------------------



SE-4, 22 OCT 2009 to 19 NOV 2009

SE-4, 22 OCT 2009 to 19 NOV 2009



4000	FOYGU	TRK 212°	WILED	VGSI and RNAV glidepath not coincident.	DEZLY
* LNAV Only.					
RW23		YAKUB 2 NM to RW23	MITNE	2700	3000
2 NM		3 NM	6 NM		Procedure Turn NA
GS 3.00° TCH 45					
CATEGORY	A	B	C	D	
LPV DA	1331-1 299 (300-1)				
LNAV MDA	1440-1	408 (500-1)	1440-1¼	408 (500-1¼)	
CIRCLING	1480-1	1500-1	1500-1½	1600-2	
	448 (500-1)	468 (500-1)	468 (500-1½)	568 (600-2)	

ALBERTVILLE, ALABAMA
Amdt 1 08101

ALBERTVILLE/ALBERTVILLE RGNL-THOMAS J BRUMLIK FIELD (8A) (M)
34° 14'N-86° 15'W

RNAV (GPS) RWY 23