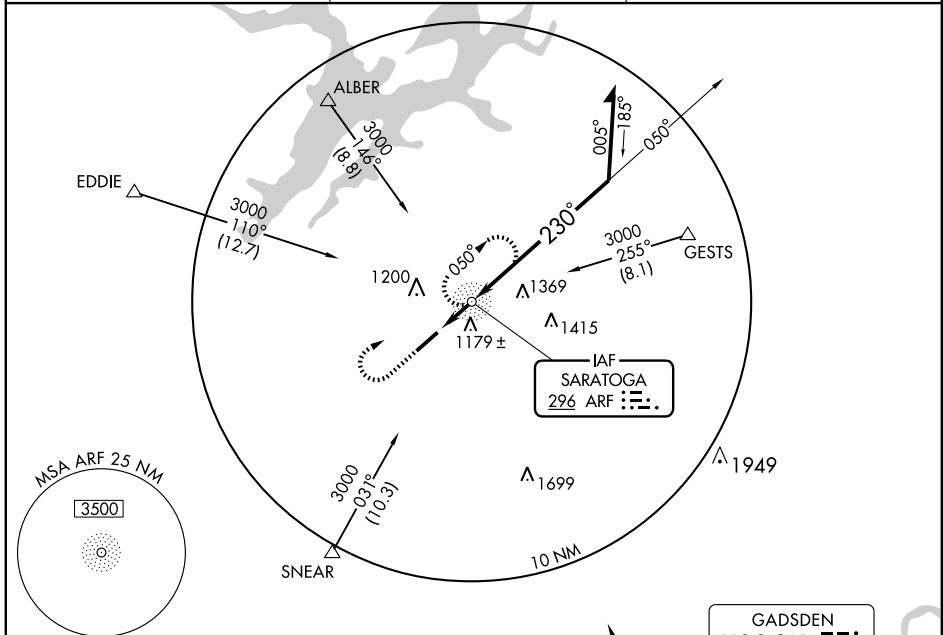


NDB ARF 296	APP CRS 230°	Rwy Idg TDZE Apt Elev N/A N/A 1032
-----------------------	------------------------	--

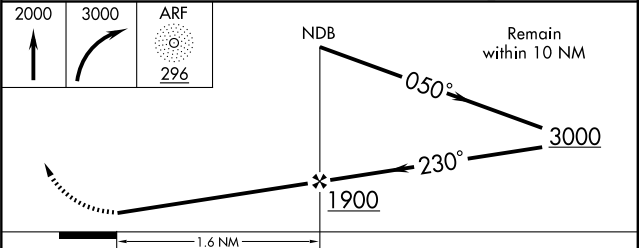
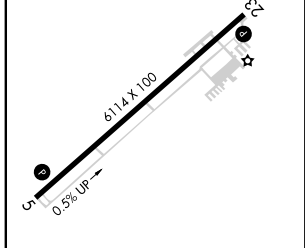
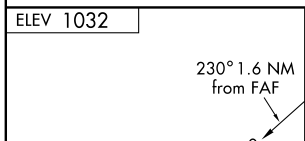
ALBERTVILLE/ALBERTVILLE RGNI-THOMAS J BRUMLIK FIELD (8A)(f)

<p>NA When local altimeter setting not received, use Huntsville Intl altimeter setting.</p>	<p>MISSED APPROACH: Climb to 2000 then climbing right turn to 3000 direct ARF NDB and hold.</p>
--	---

AWOS-3 119.575	BIRMINGHAM APP CON 132.15 285.45	UNICOM 123.0 (CTAF)
--------------------------	--	-------------------------------



SE-4, 22 OCT 2009 to 19 NOV 2009



ELEV 1032

REIL Rwy 23 (f)
MIRL Rwy 5-23 (f)

FAF to MAP 1.6 NM

Knots	60	90	120	150	180
Min:Sec	1:36	1:04	0:48	0:38	0:32

CATEGORY	A	B	C	D
CIRCLING	1480-1 448 (500-1)	1500-1 468 (500-1)	1500-1½ 468 (500-1½)	1600-2 568 (600-2)
HUNTSVILLE INTL ALTIMETER SETTING MINIMUMS				
CIRCLING	1620-1 588 (600-1)	1640-1 608 (700-1)	1640-1¾ 608 (700-1¾)	1640-2 608 (700-2)