

RNAV (GPS) RWY 36

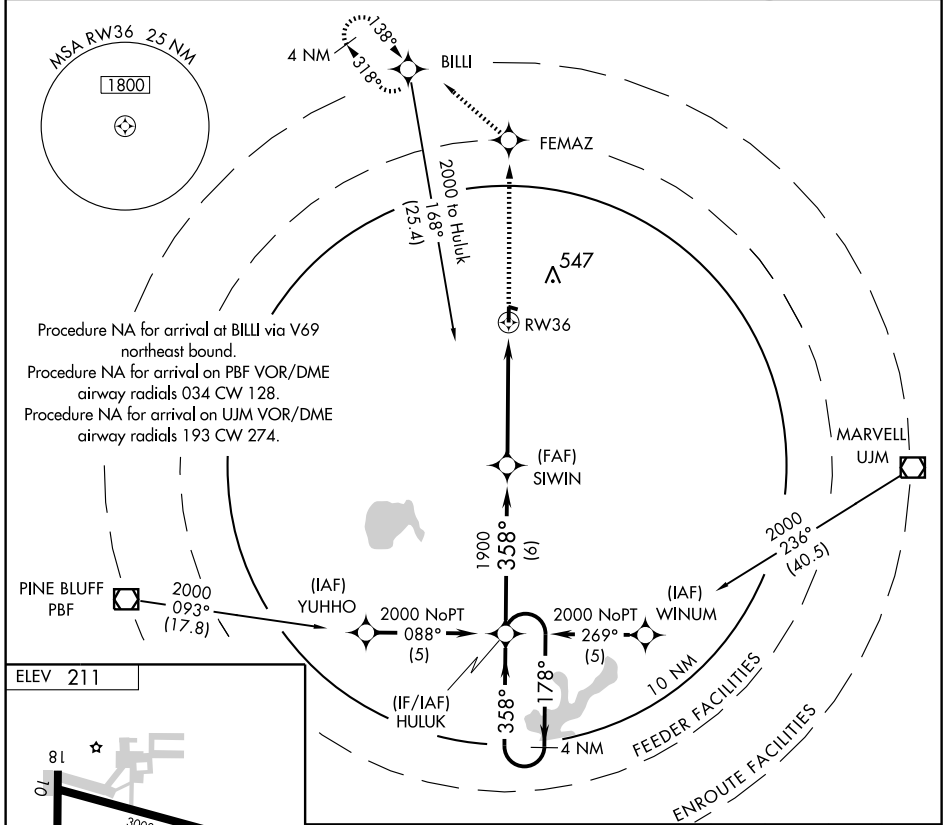
ALMYRA MUNI (M73)

APP CRS 358°	Rwy Idg 3496
	TDZE 210
	Apt Elev 211

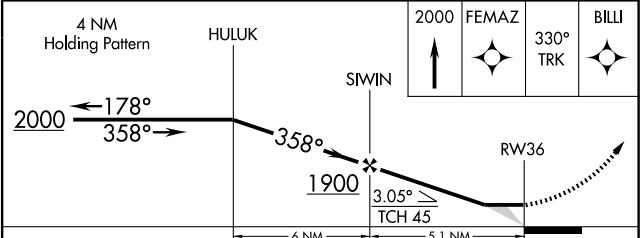
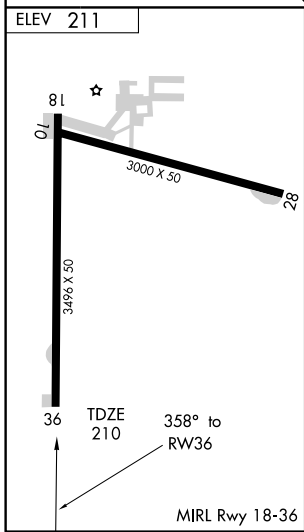
NA Use Stuttgart altimeter setting; if not received, use Pine Bluff/Grider Field altimeter setting and increase all MDAs 40 feet. DME/DME RNP-0.3 NA.

MISSED APPROACH: Climb to 2000 direct FEMAZ and via 330° track to BILLI and hold.

STUTTGART AWOS-3 119.025	LITTLE ROCK APP CON 119.85 353.6	CLNC DEL 119.85	UNICOM 123.0 (CTAF)
------------------------------------	--	---------------------------	-------------------------------



Procedure NA for arrival at BILLI via V69 northeast bound.
 Procedure NA for arrival on PBF VOR/DME airway radials 034 CW 128.
 Procedure NA for arrival on UJM VOR/DME airway radials 193 CW 274.



CATEGORY	A	B	C	D
LNAV MDA	680-1	470 (500-1)	680-1 1/4 470 (500-1 1/4)	NA
CIRCLING	680-1	469 (500-1)	940-2 729 (800-2)	NA

SC-1, 22 OCT 2009 to 19 NOV 2009

SC-1, 22 OCT 2009 to 19 NOV 2009