

CLEVELAND, MISSISSIPPI

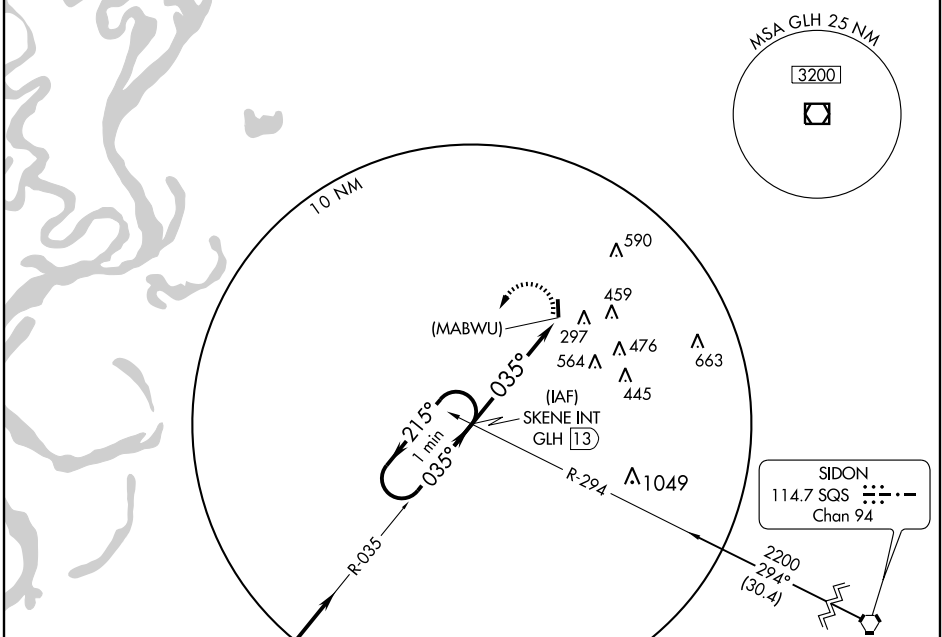
AL-5921 (FAA)

VOR or GPS-A
CLEVELAND MUNI (R.N.V)

VOR/DME GLH 110.2 Chan 39	APP CRS 035°	Rwy Idg TDZE Apt Elev 140	N/A N/A 140
---	------------------------	---	--

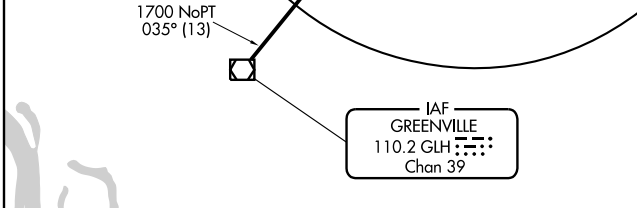
▼ Use Greenwood altimeter setting.
▲ NA MISSED APPROACH: Climbing left turn to 1700 via GLH R-035 to SKENE Int and hold.

AWOS-3 124.175	MEMPHIS CENTER 135.875 269.35	UNICOM 122.725 (CTAF)
--------------------------	---	---------------------------------

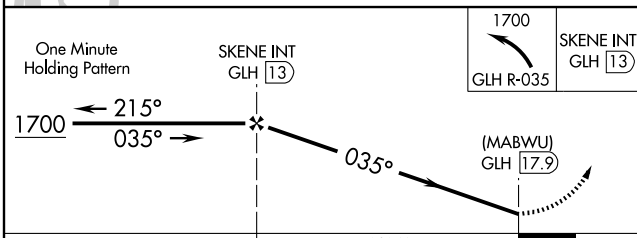
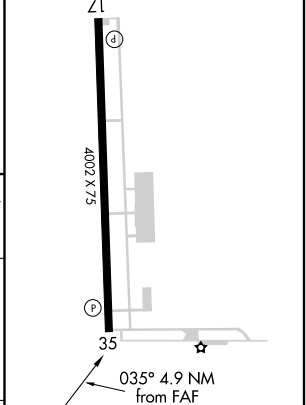


SC-4, 22 OCT 2009 to 19 NOV 2009

SC-4, 22 OCT 2009 to 19 NOV 2009



ELEV 140	MIRL Rwy 17-35
----------	----------------



CATEGORY	A	B	C	D	FAF to MAP 4.9 NM					
CIRCLING	860-1	720 (800-1)	860-2	1040-3	Knots	60	90	120	150	180
			720 (800-2)	900 (900-3)	Min:Sec	4:54	3:16	2:27	1:58	1:38

CLEVELAND, MISSISSIPPI
Amdt 7 07074

33°46'N-90°45'W

CLEVELAND MUNI (R.N.V)
VOR or GPS-A