

**GPS RWY 35**  
CLEVELAND MUNI (RNV)

APP CRS **359°**  
Rwy Idg **4002**  
TDZE **140**  
Apt Elev **140**

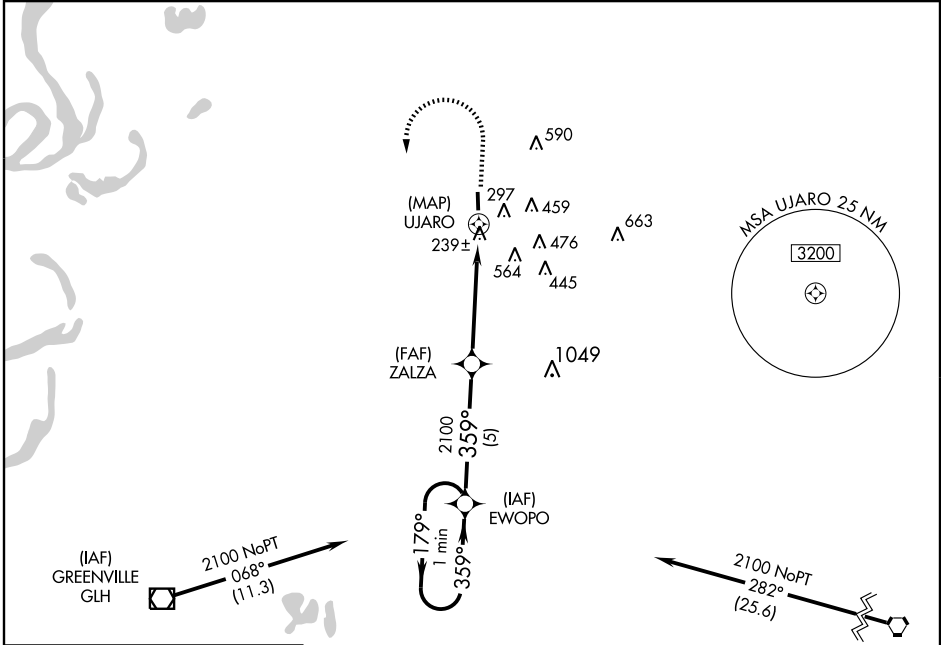
▼  
▲ NA When local altimeter setting not received, use Greenwood altimeter setting.

MISSED APPROACH: Climb to 1000 then climbing left turn to 2100 direct EWOPW WP and hold.

AWOS-3  
**124.175**

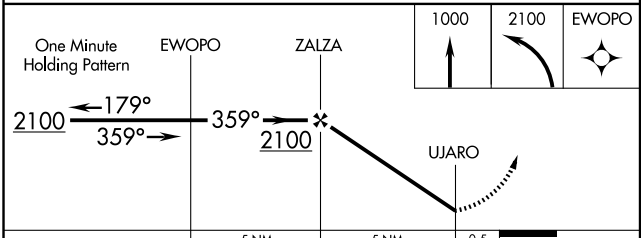
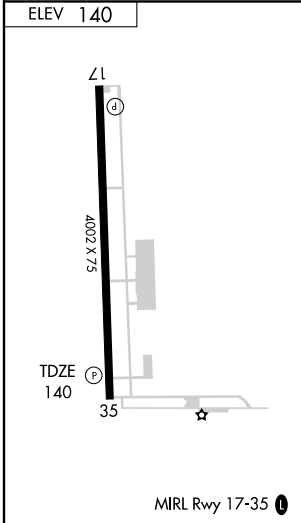
MEMPHIS CENTER  
**135.875 269.35**

UNICOM  
**122.725 (CTAF)**



SC-4, 22 OCT 2009 to 19 NOV 2009

SC-4, 22 OCT 2009 to 19 NOV 2009



CATEGORY	A	B	C	D
S-35	580-1	440 (500-1)	580-1¼ 440 (500-1¼)	580-1½ 440 (500-1½)
CIRCLING	700-1	560 (600-1)	820-2 680 (700-2)	1040-2¾ 900 (900-2¾)