

BREWTON, ALABAMA

AL-5920 (FAA)

# VOR/DME or GPS RWY 30

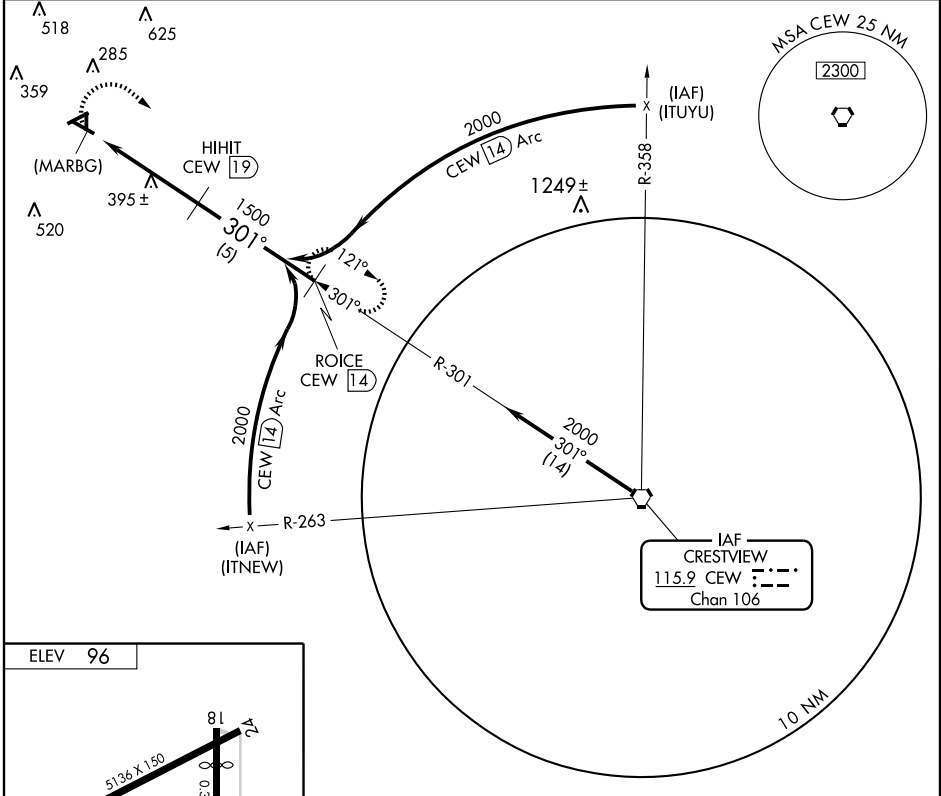
BREWTON MUNI (12J)

VORTAC CEW <b>115.9</b> Chan <b>106</b>	APP CRS <b>301°</b>	Rwy Idg TDZE <b>96</b> Apt Elev <b>96</b>	<b>5001</b>
---	------------------------	---	-------------

Use Pensacola altimeter setting.  
Straight-in minimums not authorized at night.

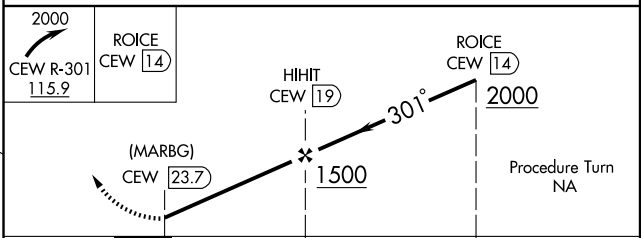
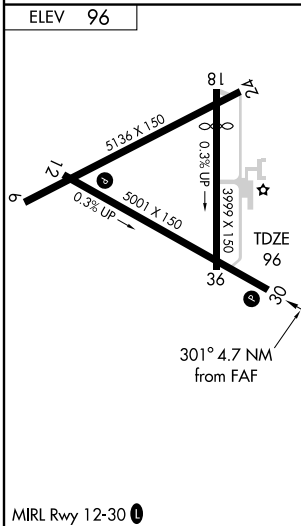
MISSED APPROACH: Climbing right turn to 2000 via CEW R-301 to ROICE/CEW 14 DME and hold.

AWOS-3 <b>119.325</b>	JACKSONVILLE CENTER <b>120.2 346.4</b>	UNICOM <b>122.725</b> (CTAF) <b>0</b>
--------------------------	---	--



SE-4, 22 OCT 2009 to 19 NOV 2009

SE-4, 22 OCT 2009 to 19 NOV 2009



CATEGORY	A	B	C	D
S-30	740-1 644 (700-1)	740-1¼ 644 (700-1¼)	740-1¾ 644 (700-1¾)	740-2 644 (700-2)
CIRCLING	740-1 644 (700-1)	740-1¼ 644 (700-1¼)	760-1¾ 664 (700-1¾)	780-2¼ 684 (700-2¼)

BREWTON, ALABAMA  
Amdt 7 09183

BREWTON MUNI (12J)

31° 03'N-87° 04'W **VOR/DME or GPS RWY 30**