

BREWTON, ALABAMA

AL-5920 (FAA)

GPS RWY 6

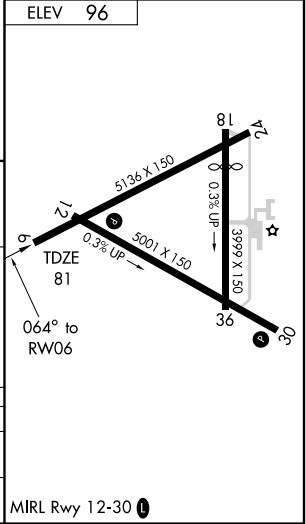
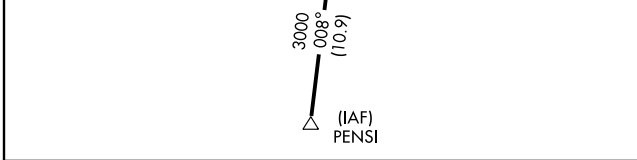
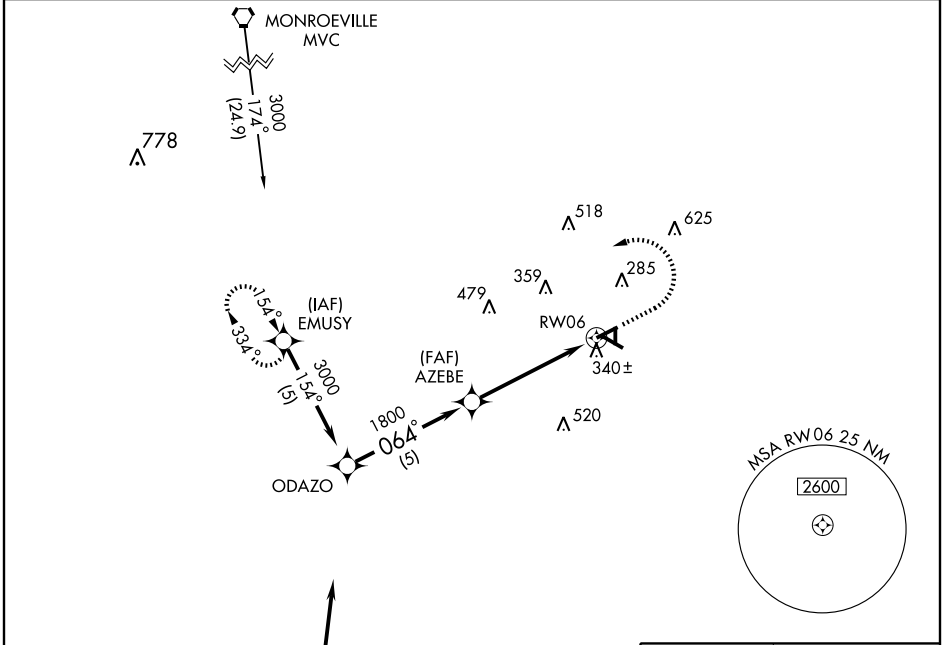
BREWTON MUNI(12J)

APP CRS	Rwy Idg	5136
064°	TDZE	81
	Apt Elev	96

▼ Use Pensacola altimeter setting.
▲ NA

MISSED APPROACH: Climb to 800 then climbing left turn to 3000 direct EMUSY WP and hold

AWOS-3 119.325	JACKSONVILLE CENTER 120.2 346.4	UNICOM 122.725 (CTAF)
--------------------------	---	---------------------------------



CATEGORY	A	B	C	D
S-6	680-1 599 (600-1)		680-1½ 599 (600-1½)	680-1¾ 599 (600-1¾)
CIRCLING	740-1 644 (700-1)		760-1¾ 664 (700-1¾)	780-2¼ 684 (700-2¼)

BREWTON, ALABAMA
Orig 09183

31°03'N-87°04'W

BREWTON MUNI(12J) GPS RWY 6

SE-4, 22 OCT 2009 to 19 NOV 2009

SE-4, 22 OCT 2009 to 19 NOV 2009