

GREENVILLE, MAINE

AL-5918 (FAA)

NDB RWY 14

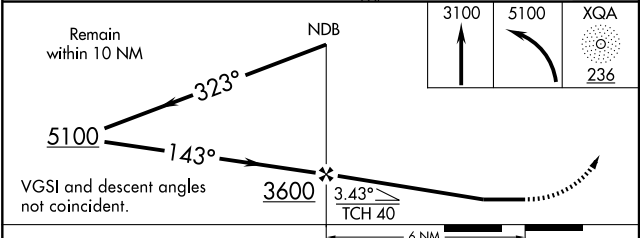
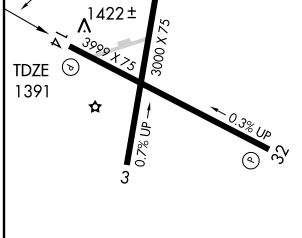
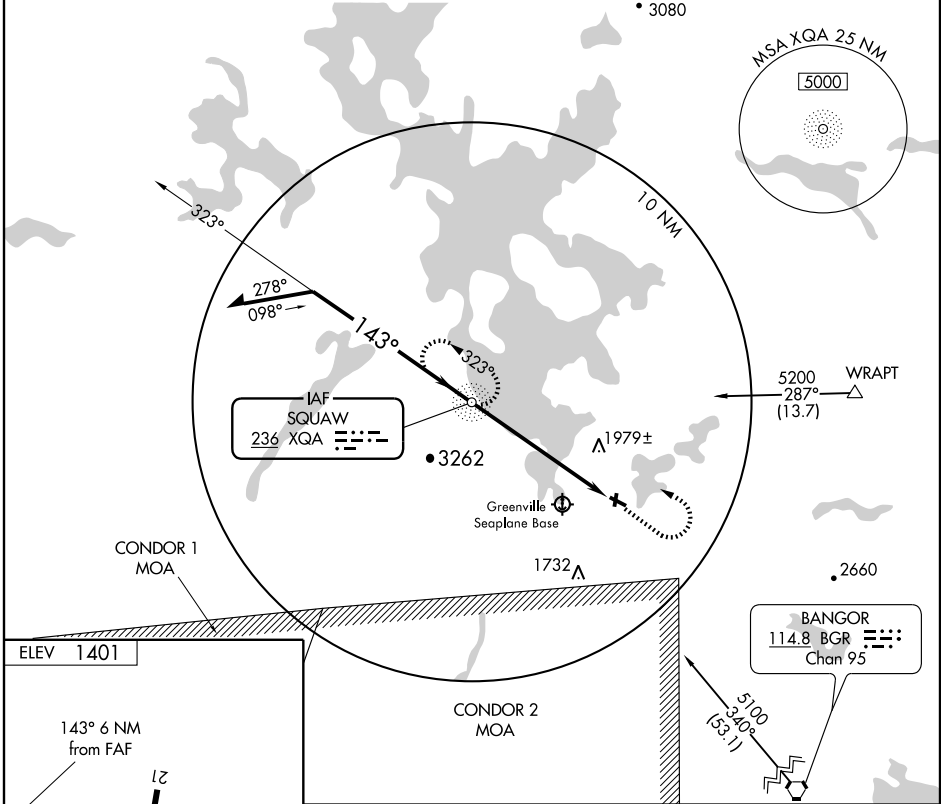
GREENVILLE MUNI (3B1)

NDB XQA 236	APP CRS 143°	Rwy Idg TDZE Apt Elev	3999 1391 1401
-----------------------	------------------------	-----------------------------	---

⚠ When local altimeter setting not received, use Bangor altimeter setting and increase all MDAs 300 feet and increase Cat B and C circling visibility ¼ mile.

MISSED APPROACH: Climb to 3100 then climbing left turn to 5100 direct XQA NDB and hold, continue climb-in-hold to 5100.

AWOS-A 236	BOSTON CENTER 120.25 346.4	CLNC DEL 122.3	UNICOM 122.8 (CTAF) 0
----------------------	--------------------------------------	--------------------------	---------------------------------



REIL Rwy 14
MIRL Rwy 14-32

FAF to MAP 6 NM					
Knots	60	90	120	150	180
Min:Sec	6:00	4:00	3:00	2:24	2:00

CATEGORY	A	B	C	D
S-14	2280-1¼ 889 (900-1¼)		2280-2¾ 889 (900-2¾)	2280-3 889 (900-3)
CIRCLING	2280-1¼ 879 (900-1¼)		2280-2¾ 879 (900-2¾)	2500-3 1099 (1100-3)

GREENVILLE, MAINE
Amdt 5 09071

45°28'N - 69°33'W

GREENVILLE MUNI (3B1)
NDB RWY 14

NE-1, 22 OCT 2009 to 19 NOV 2009

NE-1, 22 OCT 2009 to 19 NOV 2009