

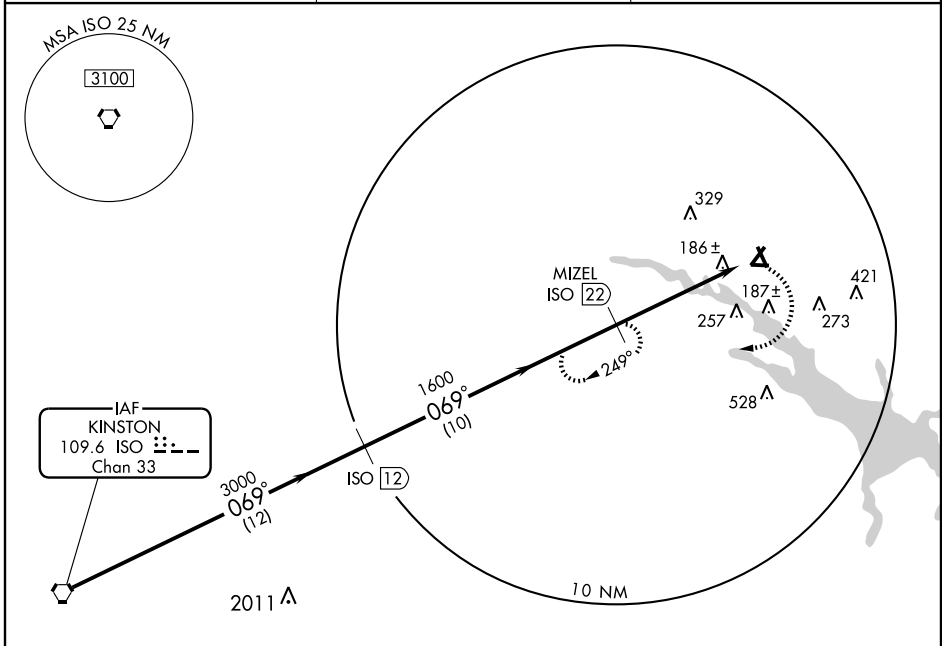
VORTAC ISO 109.6 Chan 33	APP CRS 069°	Rwy Idg TDZE 35 Apt Elev 38	5000 35 38
--	------------------------	---	---------------------------------------

VOR/DME RWY 5

WASHINGTON/ WARREN FIELD (OCW)

▲ NA MISSED APPROACH: Climbing right turn to 1600 via ISO R-069 to MIZEL ISO 22 DME and hold.

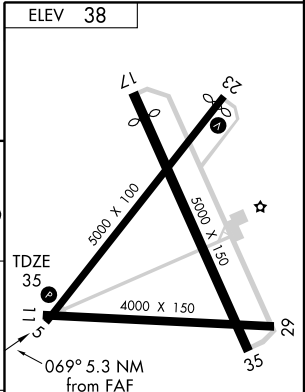
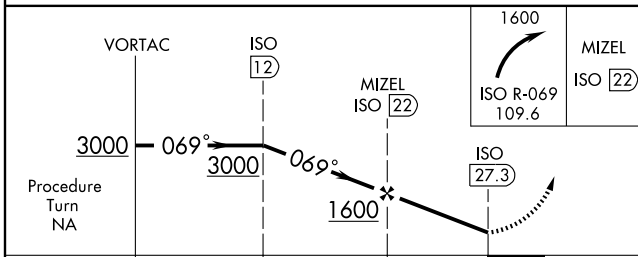
AWOS-3 120.175	WASHINGTON CENTER 135.5 272.75	UNICOM 122.7 (CTAF)
--------------------------	--	-------------------------------



SE-2, 22 OCT 2009 to 19 NOV 2009

SE-2, 22 OCT 2009 to 19 NOV 2009

IAF KINSTON 109.6 ISO Chan 33	3000 069° (12)	1600 069° (10)	ISO 12	MIZEL ISO 22	249°	186±	187±	257	329	421	273	528
--	----------------------	----------------------	--------	-----------------	------	------	------	-----	-----	-----	-----	-----



	VORTAC		ISO 12		MIZEL ISO 22		1600 ISO R-069 109.6		MIZEL ISO 22	
Procedure Turn	NA									
CATEGORY	A		B		C		D			
S-5	800-1 765 (800-1)		800-1¼ 765 (800-1¼)		800-2¼ 765 (800-2¼)		800-2½ 765 (800-2½)			
CIRCLING	800-1 762 (800-1)		800-1¼ 762 (800-1¼)		800-2¼ 762 (800-2¼)		800-2½ 762 (800-2½)			

REIL Rwy 5-23
MIRL Rwy 5-23 and 17-35