

WAAS CH <b>93810</b> <b>W23A</b>	APP CRS <b>225°</b>	Rwy Idg <b>4801</b> TDZE <b>37</b> Apt Elev <b>37</b>
--	------------------------	---

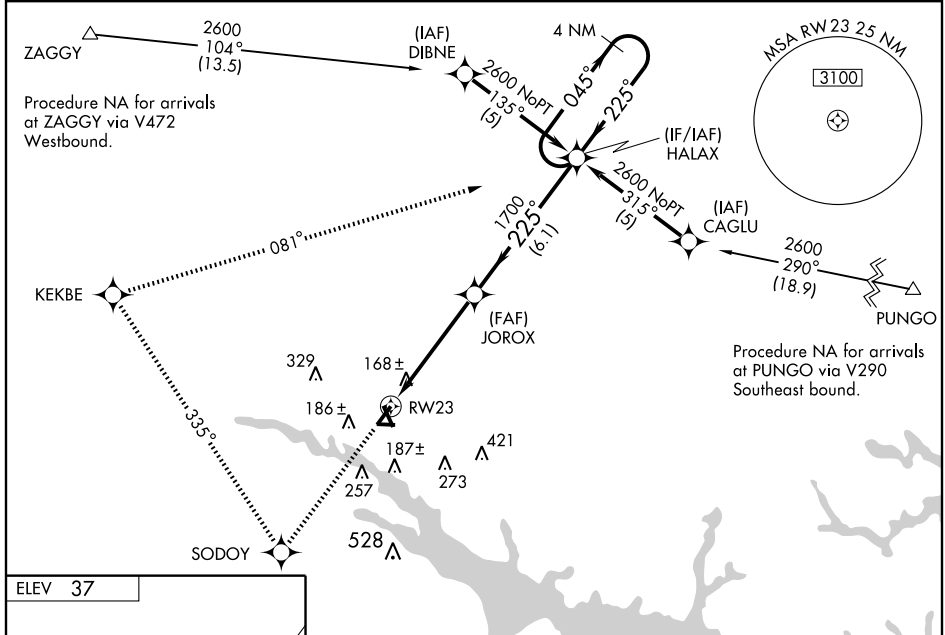
# RNAV (GPS) RWY 23

WASHINGTON/ WARREN FIELD (OCW)

**⚠** Circling to Rwy 17-35 NA at night.  
**⚠** Baro-VNAV NA when using Greenville altimeter setting.  
 For uncompensated Baro-VNAV systems, LNAV/VNAV NA below -15° C (5° F) or above 48° C (118° F). DME/DME RNP-0.3 NA.  
 Visibility reduction by helicopters NA. When local altimeter setting not received, use Greenville altimeter setting and increase LPV DA to 477, LNAV/VNAV DA to 514, and all MDA 60 feet; increase LNAV/VNAV all Cats., and LNAV Cats. C and D visibility ¼ mile.

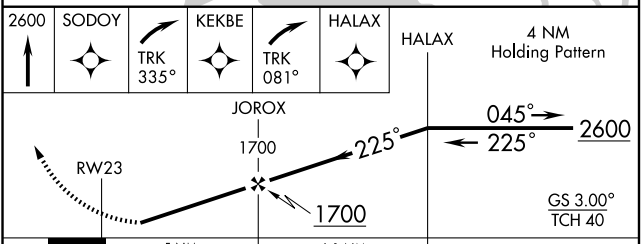
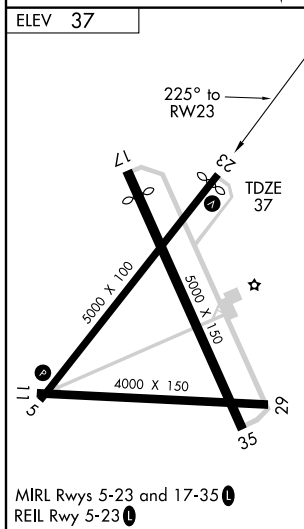
**MISSED APPROACH:** Climb to 2600 direct SODOY and right turn via 335° track to KEKBE and right turn via 081° track to HALAX and hold.

AWOS-3 <b>120.175</b>	WASHINGTON CENTER <b>135.5 272.75</b>	UNICOM <b>122.7 (CTAF) 0</b>
--------------------------	--	---------------------------------



SE-2, 22 OCT 2009 to 19 NOV 2009

SE-2, 22 OCT 2009 to 19 NOV 2009



CATEGORY	A	B	C	D
LPV DA		436-1½	399 (400-1½)	
LNAV/VNAV DA		473-1½	436 (500-1½)	
LNAV MDA		420-1	383 (400-1)	420-1¼ 383 (400-1¼)
CIRCLING	540-1	503 (600-1)	540-1½ 503 (600-1½)	620-2 583 (600-2)