

APP CRS	Rwy Idg	<b>4499</b>
<b>163°</b>	TDZE	<b>36</b>
	Apt Elev	<b>37</b>

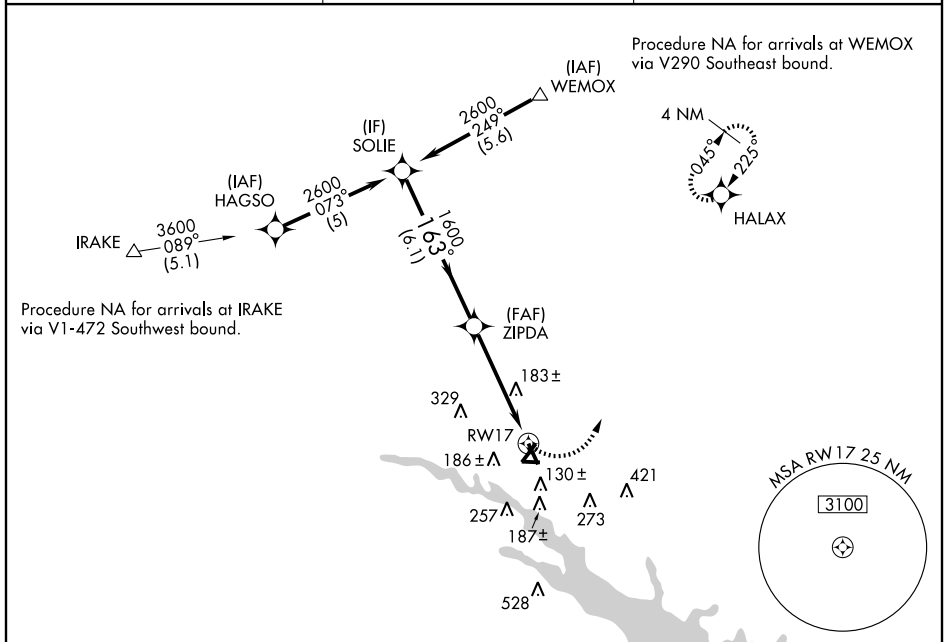
# RNAV (GPS) RWY 17

WASHINGTON/ WARREN FIELD (OCW)

**⚠** DME/DME RNP-0.3 NA. Procedure NA at night.  
**⚠** Visibility reduction by helicopters NA. When local altimeter setting not received, use Greenville altimeter setting and increase all MDA 60 feet; increase LNAV Cat. D visibility ¼ mile.

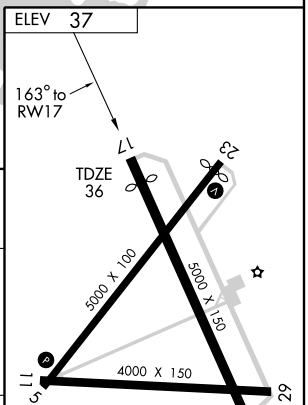
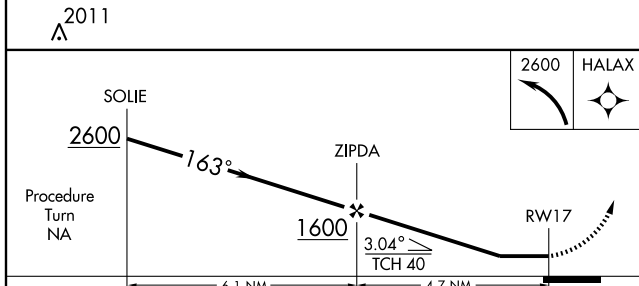
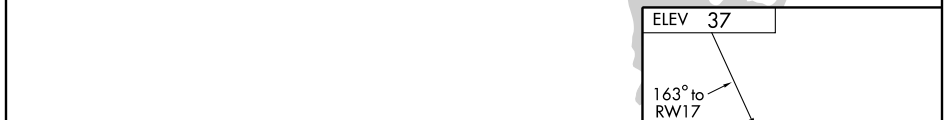
MISSED APPROACH: Climbing left turn to 2600 direct HALAX and hold.

AWOS-3 <b>120.175</b>	WASHINGTON CENTER <b>135.5 272.75</b>	UNICOM <b>122.7 (CTAF) 0</b>
--------------------------	--	---------------------------------



SE-2, 22 OCT 2009 to 19 NOV 2009

SE-2, 22 OCT 2009 to 19 NOV 2009



CATEGORY	A	B	C	D
LNAV MDA	440-1	404 (500-1)	440-1¼	404 (500-1¼)
CIRCLING	540-1	503 (600-1)	540-1½	620-2 583 (600-2)

REIL Rwy 5-23 0  
 MIRL Rwy 5-23 and 17-35 0