

RNAV (GPS) RWY 36

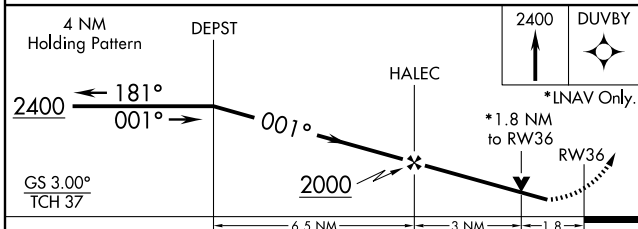
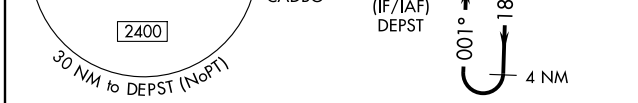
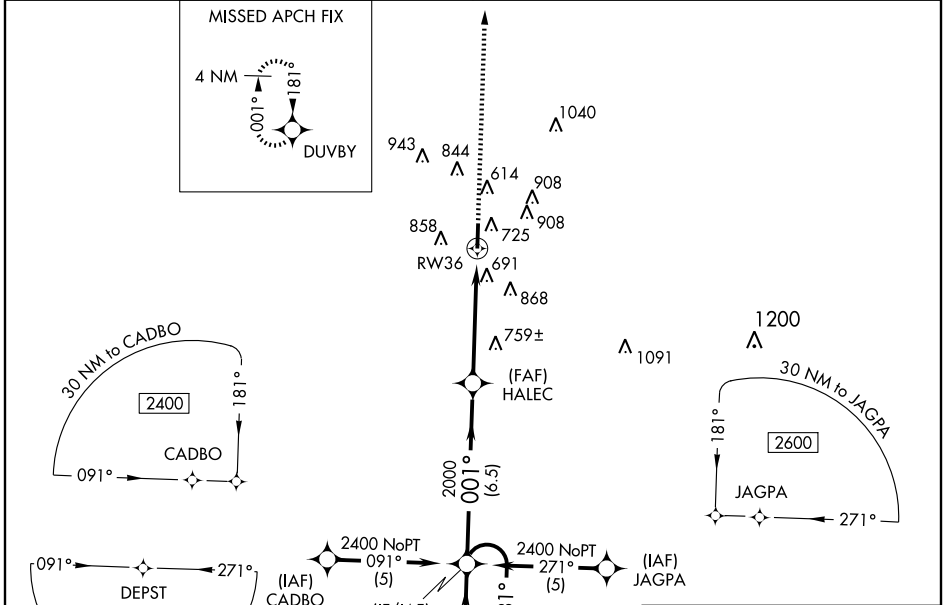
HAMILTON / MARION COUNTY-RANKIN FITE (HAB)

WAAS CH 42712 W36A	APP CRS 001°	Rwy Idg TDZE Apt Elev	5495 418 436
--	------------------------	-----------------------------	---

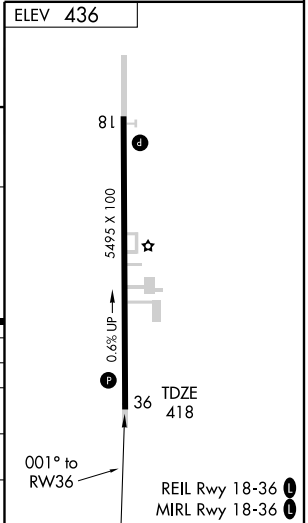
For uncompensated Baro-VNAV systems, LNAV/VNAV NA below -15°C (5°F) or above 48°C (118°F). DME/DME RNP-0.3 NA. Visibility reduction by helicopters NA. Obtain local altimeter setting on CTAF; when not received, use Tupelo altimeter setting and increase DA 104 feet and all MDA 120 feet, increase visibility LPV all Cats and LNAV Cats C, D ¼ mile, Circling Cats A, D ½ mile, and Cat C ½ mile. LNAV/VNAV NA when using Tupelo altimeter setting. VDP NA when using Tupelo altimeter setting.

MISSED APPROACH:
Climb to 2400 direct DUVBY and hold.

MEMPHIS CENTER 127.1 269.4	UNICOM 122.8 (CTAF) 0
--------------------------------------	---------------------------------



CATEGORY	A	B	C	D
LPV DA	723-1¼ 305 (300-1¼)			
LNAV/VNAV DA	1219-3 801 (800-3)			
LNAV MDA	1020-1	602 (600-1)	1020-1¾ 602 (600-1¾)	1020-2 602 (600-2)
CIRCLING	1220-1 784 (800-1)	1220-1¼ 784 (800-1¼)	1220-2¼ 784 (800-2¼)	1260-2¾ 824 (900-2¾)



SE-4, 22 OCT 2009 to 19 NOV 2009

SE-4, 22 OCT 2009 to 19 NOV 2009