

VOR/DME OBK 113.0 Chan 77	APP CRS 140°	Rwy ldg TDZE Apt Elev	N/A N/A 788
---	------------------------	-----------------------------	--



Use Chicago O'Hare altimeter setting.

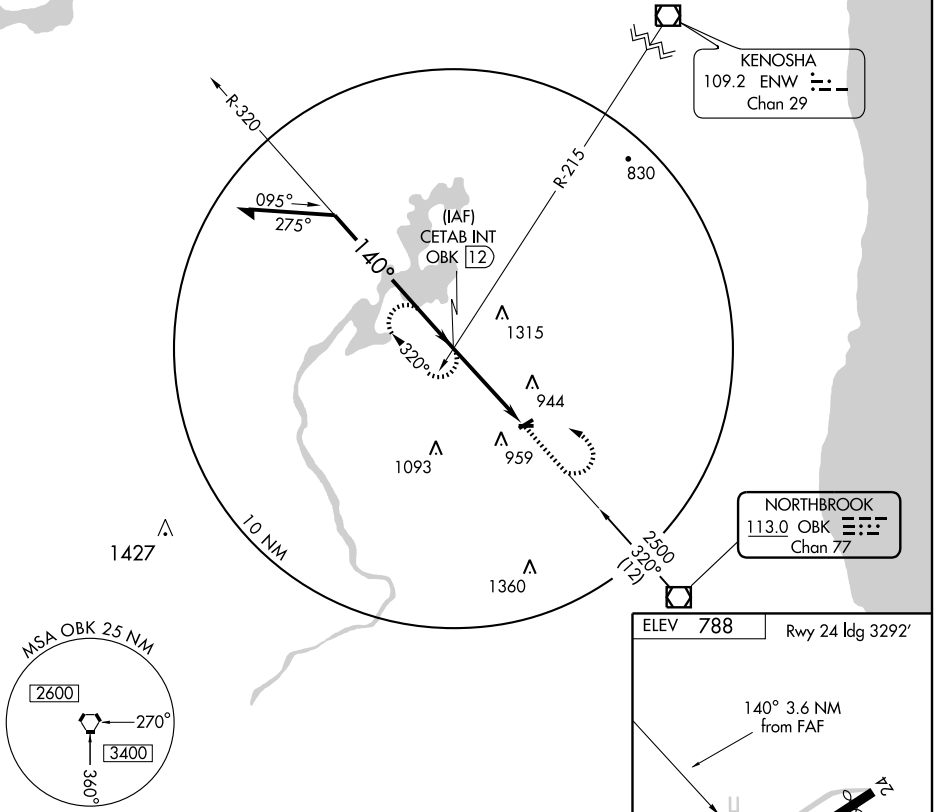
MISSED APPROACH: Climb to 2500 then left turn via OBK R-320 to CETAB Int/12 DME and hold.

CHICAGO APP CON
120.55 315.6

UNICOM
122.7 (CTAF)

EC-3, 22 OCT 2009 to 19 NOV 2009

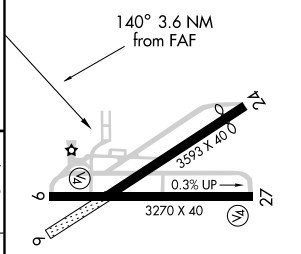
EC-3, 22 OCT 2009 to 19 NOV 2009



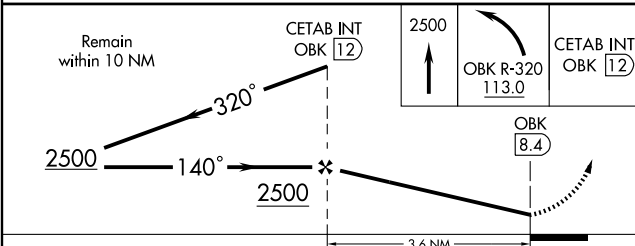
KENOSHA
109.2 ENW ---
Chan 29

NORTHBROOK
113.0 OBK ---
Chan 77

ELEV 788 Rwy 24 ldg 3292'



LIRL Rwy 9-27



CATEGORY	A	B	C	D	FAF to MAP 3.6 NM					
CIRCLING	1380-1 592 (600-1)		1380-1½ 592 (600-1½)	NA	Knots	60	90	120	150	180
					Min:Sec	3:36	2:24	1:48	1:26	1:12