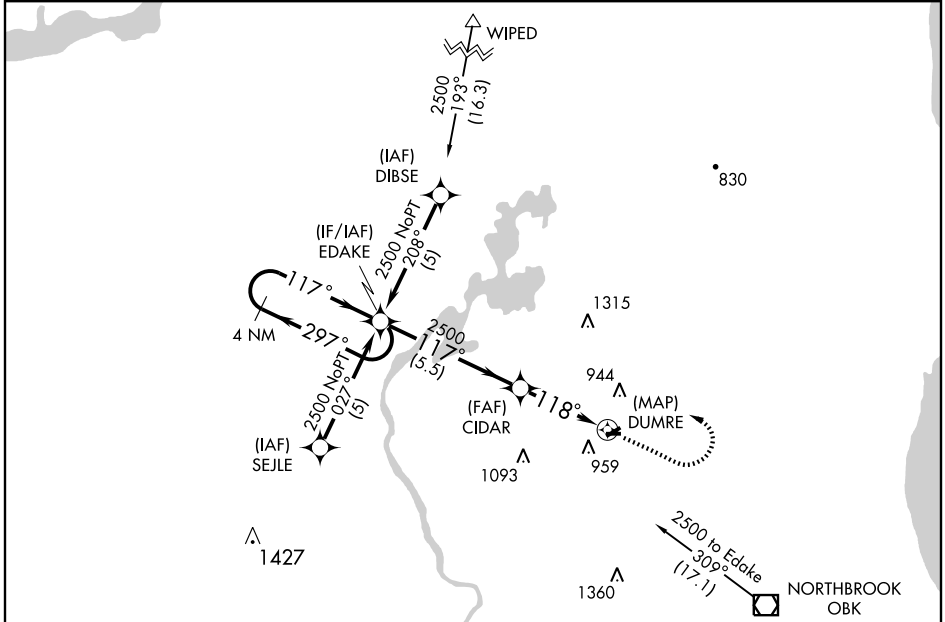


| | | |
|---------|----------|-----|
| APP CRS | Rwy Idg | N/A |
| 118° | TDZE | N/A |
| | Apt Elev | 788 |

RNAV (GPS) -B
GRAYSLAKE/CAMPBELL (C81)

| | |
|--|--|
| <p>▼ Use Chicago O'Hare altimeter setting. ▲ NA GPS or RNP-0.3 Required. DME/DME-0.3 NA.</p> | <p>MISSED APPROACH: Climb to 2000, then climbing left turn to 2500 direct EDAKE WP and hold.</p> |
| <p>CHICAGO APP CON 120.55 315.6</p> | <p>UNICOM 122.7 (CTAF)</p> |



EC-3, 22 OCT 2009 to 19 NOV 2009

EC-3, 22 OCT 2009 to 19 NOV 2009

| | |
|---|--|
| <p>ELEV 788 Rwy 24 Idg 3292'</p> | |
| | |
| <p>4 NM Holding Pattern</p> <p>EDAKE CIDAR</p> <p>2500 ← 297° 117° → 2500 118° → DUMRE</p> <p>117° →</p> <p>5.5 NM 3.5 NM</p> | |
| CATEGORY | A B C D |
| CIRCLING | 1380-1 592 (600-1) 1380-1½ 592 (600-1½) NA |

LIRL Rwy 9-27