

RNAV (GPS) RWY 35

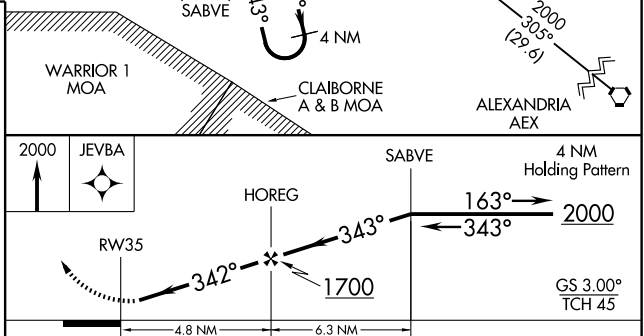
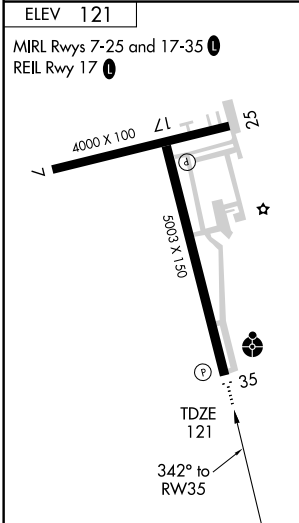
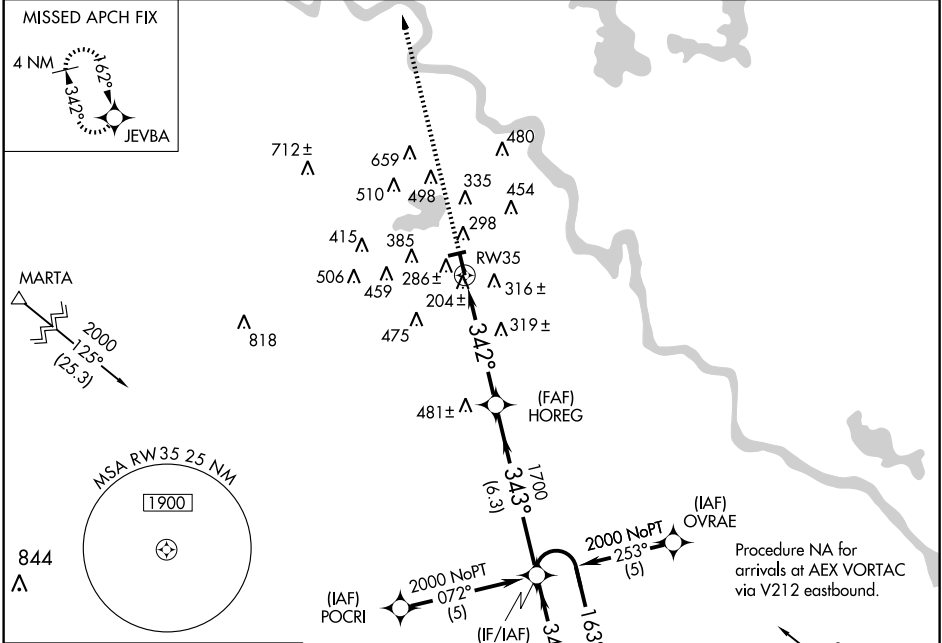
NATCHITOCHES RGNL (IE'R)

WAAS CH 86510 W35A	APP CRS 342°	Rwy ldg 5003 TDZE 121 Apt Elev 121
--	------------------------	---

⚠ Inoperative table does not apply. Baro-VNAV NA when using Alexandria Intl altimeter setting. For uncompensated Baro-VNAV systems, LNAV-VNAV NA below -15°C (5°F) or above 54°C (130°F). DME/DME RNP-0.3 NA. Visibility reduction by helicopters NA. When local altimeter setting not received, use Alexandria Intl altimeter setting and increase all DA 91 feet and all MDA 100 feet. Increase LPV and LNAV/VNAV all Cats, LNAV Cat C and circling Cat C visibility ¼ mile.

ODALS
 MISSED APPROACH: Climb to 2000 direct JEVBA and hold.

AWOS-3 119.025	POLK APP CON 125.4 302.2	GCO 135.075	UNICOM 122.8 (CTAF) 0
--------------------------	------------------------------------	-----------------------	---------------------------------



CATEGORY	A	B	C	D
LPV DA		371-1	250 (300-1)	NA
LNAV/VNAV DA		618-1¾	497 (500-1¾)	NA
LNAV MDA	620-1	499 (500-1)	620-1¼ 499 (500-1¼)	NA
CIRCLING	680-1 559 (600-1)	740-1 619 (700-1)	740-1¾ 619 (700-1¾)	NA

SC-4, 22 OCT 2009 to 19 NOV 2009

SC-4, 22 OCT 2009 to 19 NOV 2009