

RNAV (GPS) RWY 17

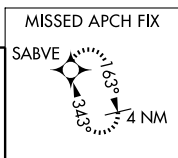
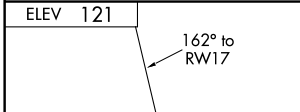
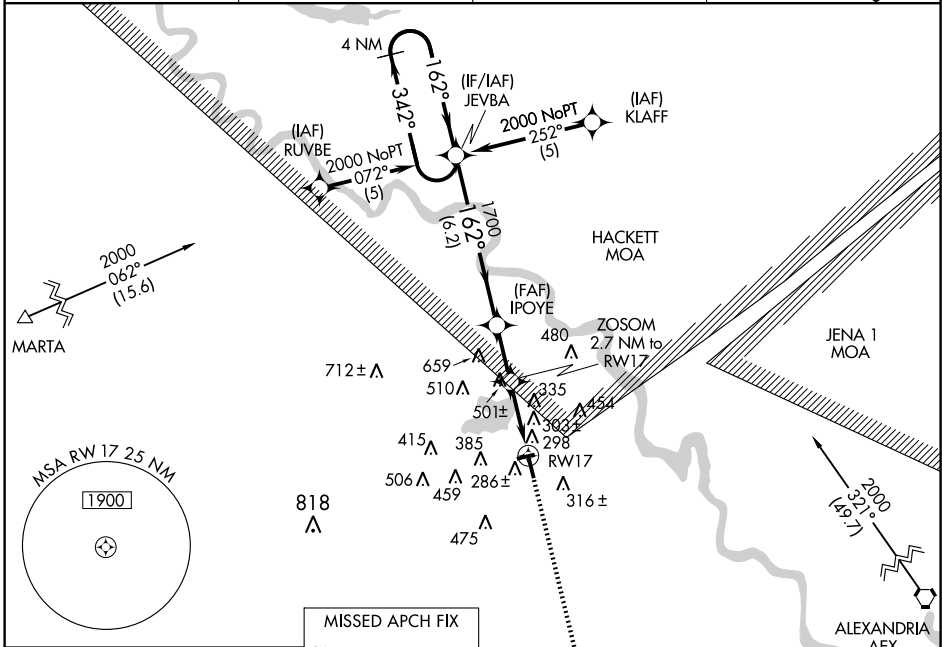
NATCHITOCHES RGNL (IER)

WAAS CH 77810 W17A	APP CRS 162°	Rwy ldg 5003 TDZE 117 Apt Elev 121
--	------------------------	---

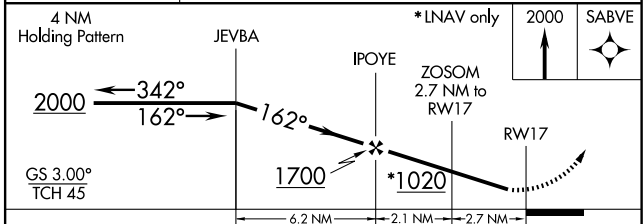
Baro-VNAV NA when using Alexandria Intl altimeter setting. For uncompensated Baro-VNAV systems, LNAV/VNAV NA below -15°C (5°F) or above 54°C (130°F). DME/DME RNP-0.3 NA. Visibility reduction by helicopters NA. When local altimeter setting not received, use Alexandria Intl altimeter setting and increase all DA/MDA 100 feet and all visibilities 1/2 mile.

MISSED APPROACH: Climb to 2000 direct SABVE and hold.

AWOS-3 119.025	POLK APP CON 125.4 302.2	GCO 135.075	UNICOM 122.8 (CTAF)
--------------------------	------------------------------------	-----------------------	-------------------------------



Procedure NA for arrivals at AEX VORTAC via V212 eastbound.



CATEGORY	A	B	C	D
LPV DA		420-1	303 (300-1)	NA
LNAV/VNAV DA		657-2	540 (600-2)	NA
LNAV MDA	760-1	643 (700-1)	760-1 ³⁴ 643 (700-1 ³⁴)	NA
CIRCLING	760-1	639 (700-1)	760-1 ³⁴ 639 (700-1 ³⁴)	NA

REIL Rwy 17 **1**
MIRL Rwy 7-25 and 17-35 **1**

SC-4, 22 OCT 2009 to 19 NOV 2009

SC-4, 22 OCT 2009 to 19 NOV 2009