

VORTAC CYN 113.4 Chan 81	APP CRS 300°	Rwy Idg TDZE Apt Elev	N/A N/A 54
--	------------------------	-----------------------------	---------------------------------------

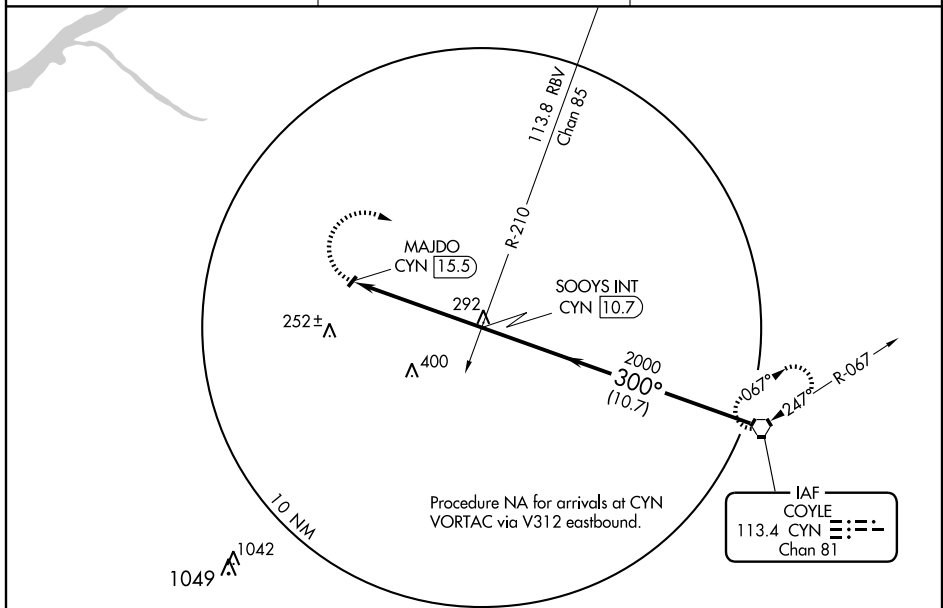
V Use Mount Holly altimeter setting; when not received, use McGuire AFB altimeter setting and increase all MDA 20 feet.
Δ NA

MISSED APPROACH: Climbing right turn to 2000 direct CYN VORTAC and hold.

McGUIRE APP CON
124.15 363.8

UNICOM
122.8 (CTAF)

123.5

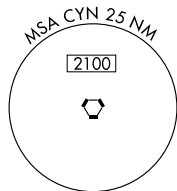


Procedure NA for arrivals at CYN VORTAC via V312 eastbound.

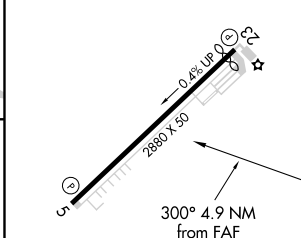
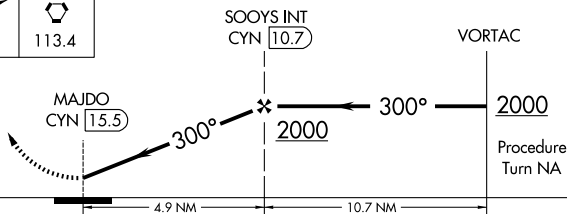
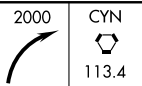
IAF
COYLE
113.4 CYN
Chan 81

NE-2, 22 OCT 2009 to 19 NOV 2009

NE-2, 22 OCT 2009 to 19 NOV 2009



ELEV **54**



MIRL Rwy 5-23

CATEGORY	A	B	C	D
CIRCLING	620-1	566 (600-1)		NA

FAF to MAP 4.9 NM					
Knots	60	90	120	150	180
Min:Sec	4:54	3:16	2:27	1:58	1:38