

BAD AXE, MICHIGAN

AL-5908 (FAA)

WAAS CH <b>69205</b> <b>W17A</b>	APP CRS <b>170°</b>	Rwy Idg TDZE <b>763</b> Apt Elev <b>763</b>	<b>5009</b> <b>763</b>
--	------------------------	---	---------------------------

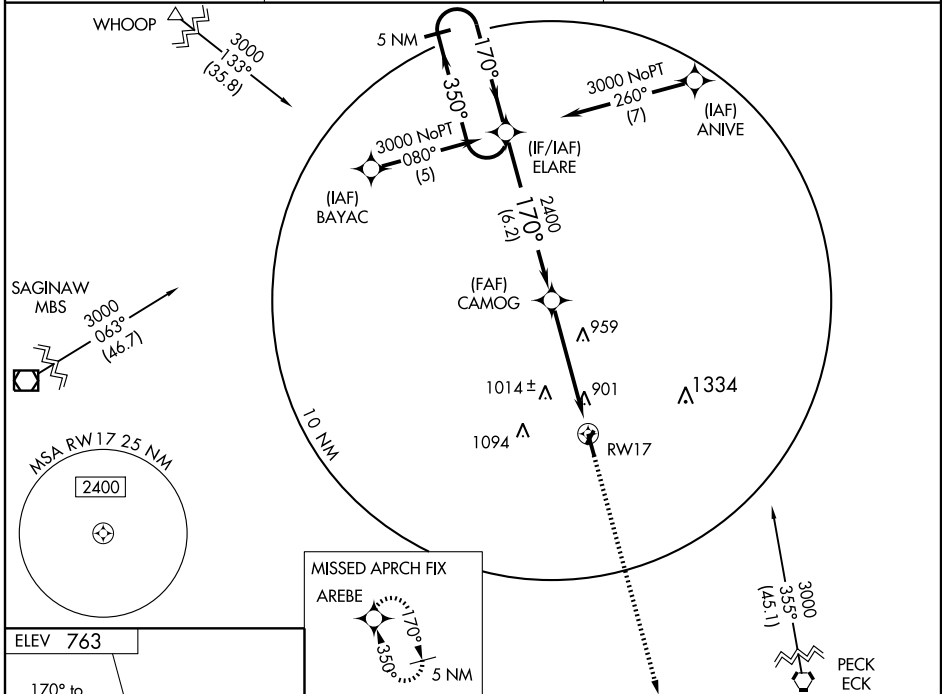
# RNAV (GPS) RWY 17

BAD AXE / HURON COUNTY MEMORIAL (BAX)

When VGSI inop, procedure NA at night. DME/DME RNP-0.3 NA. Baro-VNAV NA when using Saginaw Intl altimeter setting. For uncompensated Baro-VNAV systems, LNAV/VNAV NA below -16°C (4°F) or above 54°C (130°F). Visibility reduction by helicopters NA. If local altimeter setting not received, use Saginaw Intl altimeter setting and increase all DAs 129 feet and all MDAs 140 feet.

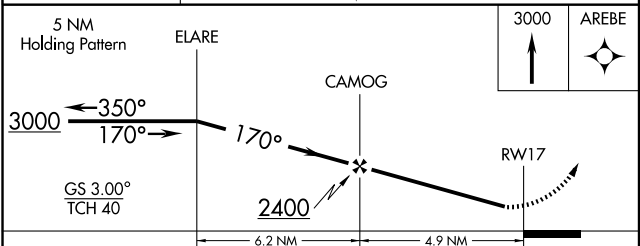
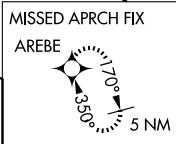
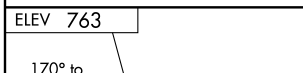
MISSED APPROACH: Climb to 3000 direct AREBE and hold.

AWOS-3 <b>108.2</b>	CLEVELAND CENTER <b>127.7 307.8</b>	UNICOM <b>122.975 (CTAF) 0</b>
------------------------	--	-----------------------------------



EC-1, 22 OCT 2009 to 19 NOV 2009

EC-1, 22 OCT 2009 to 19 NOV 2009



CATEGORY	A	B	C	D
LPV DA		1075-1	312 (400-1)	NA
LNAV/VNAV DA		1352-2	589 (600-2)	NA
LNAV MDA	1220-1	457 (500-1)	1220-1¼ 457 (500-1¼)	NA
CIRCLING	1300-1 537 (600-1)	1320-1 557 (600-1)	1320-1½ 557 (600-1½)	NA

BAD AXE, MICHIGAN  
Orig 09295

43°47'N - 82°59'W

BAD AXE / HURON COUNTY MEMORIAL (BAX)  
**RNAV (GPS) RWY 17**