

PORT LAVACA, TEXAS

AL-5904 (FAA)

VOR/DME-A

PORT LAVACA/CALHOUN COUNTY (PKV)

VORTAC PSX <b>117.3</b> Chan 120	APP CRS <b>244°</b>	Rwy ldg TDZE Apt Elev	<b>N/A</b> <b>N/A</b> <b>30</b>
--	------------------------	-----------------------------	---------------------------------------

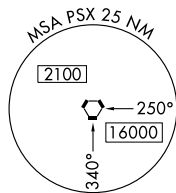
▲ NA Use Victoria Rgnl altimeter setting.

MISSED APPROACH: Climb to 2100, then right turn via PSX VORTAC R-244 to CATOS/PSX 1.5 DME and hold.

AWOS-3  
**118.275**

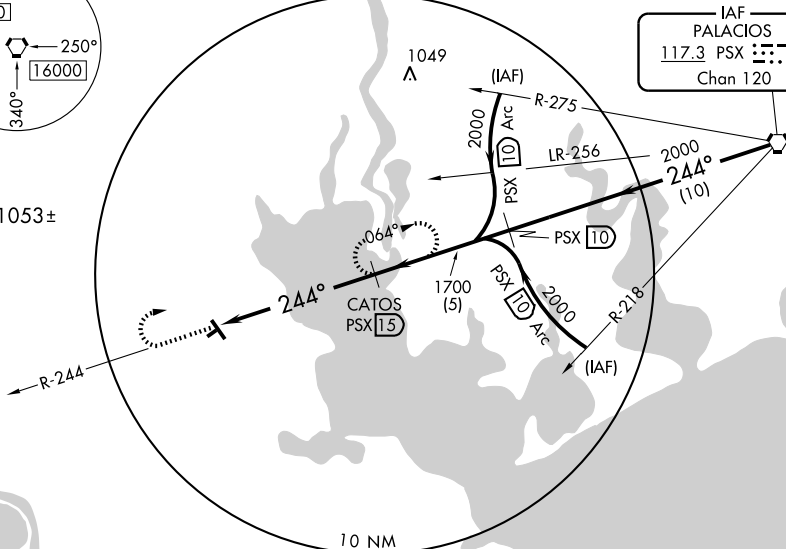
HOUSTON CENTER  
**128.15 350.3**

UNICOM  
**122.8** (CTAF) **0**



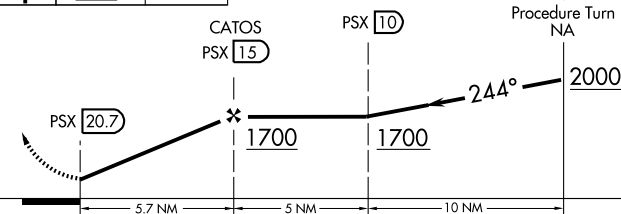
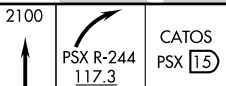
▲ 1053±

IAF  
PALACIOS  
117.3 PSX  
Chan 120

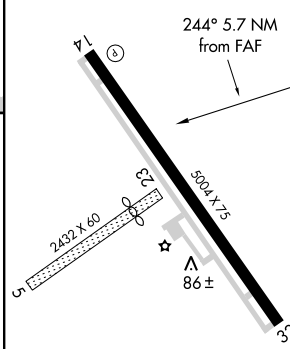


SC-5, 22 OCT 2009 to 19 NOV 2009

SC-5, 22 OCT 2009 to 19 NOV 2009



ELEV 30 Rwy 23 ldg 2004'



CATEGORY	A	B	C	D
CIRCLING	760-1 730 (800-1)	760-1¼ 730 (800-1¼)	760-2 730 (800-2)	NA

MIRL Rwy 14-32	0				
Knots	60	90	120	150	180
Min:Sec					

PORT LAVACA, TEXAS  
Amdt 4A 08157

28° 39' N-96° 41' W

PORT LAVACA/CALHOUN COUNTY (PKV)  
VOR/DME-A