

# RNAV (GPS) RWY 14

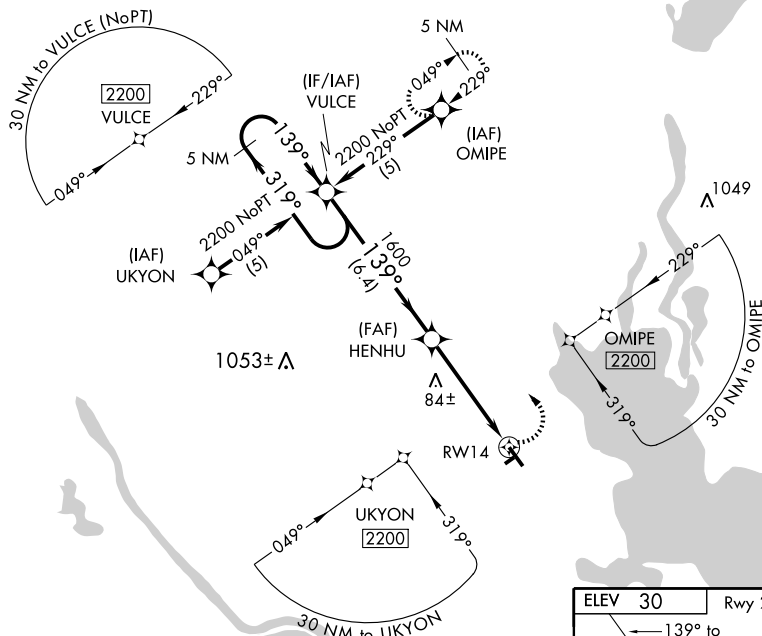
PORT LAVACA/CALHOUN COUNTY (PKV)

APP CRS	Rwy ldg	<b>5004</b>
<b>139°</b>	TDZE	<b>30</b>
	Apt Elev	<b>30</b>

**⚠** If local altimeter setting not received, use Victoria Rgnl altimeter setting and increase all MDAs 60 feet. VDP NA with Victoria Rgnl altimeter setting. DME/DME RNP-0.3 NA.

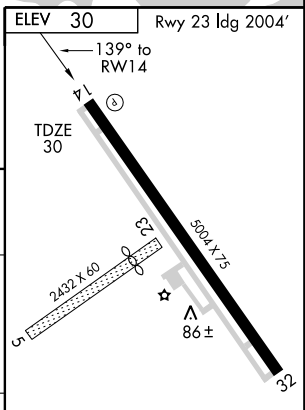
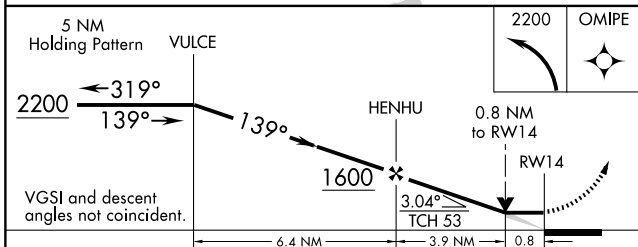
MISSED APPROACH: Climbing left turn to 2200 direct OMIPE and hold.

AWOS-3 <b>118.275</b>	HOUSTON CENTER <b>128.15 350.3</b>	UNICOM <b>122.8 (CTAF) 0</b>
--------------------------	---------------------------------------	---------------------------------



SC-5, 22 OCT 2009 to 19 NOV 2009

SC-5, 22 OCT 2009 to 19 NOV 2009



CATEGORY	A	B	C	D
LNVA MDA	440-1	410 (500-1)	440-1¼ 410 (500-1¼)	NA
CIRCLING	480-1	450 (500-1)	480-1½ 450 (500-1½)	NA

MIRL Rwy 14-32 0