

NEW MADRID, MISSOURI

AL-5903 (FAA)

VORTAC MAW <b>111.2</b> Chan <b>49</b>	APP CRS <b>091°</b>	Rwy Idg TDZE Apt Elev <b>N/A</b> <b>N/A</b> <b>296</b>
--	------------------------	---

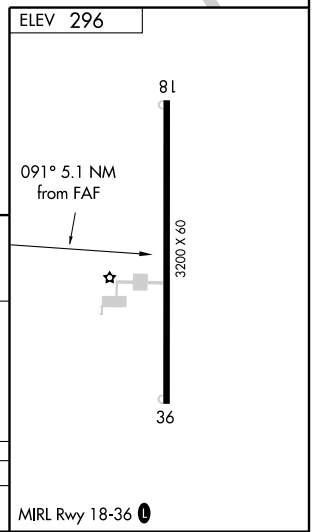
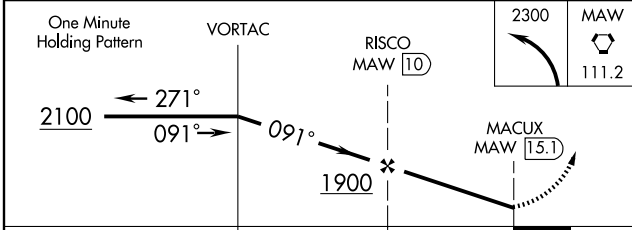
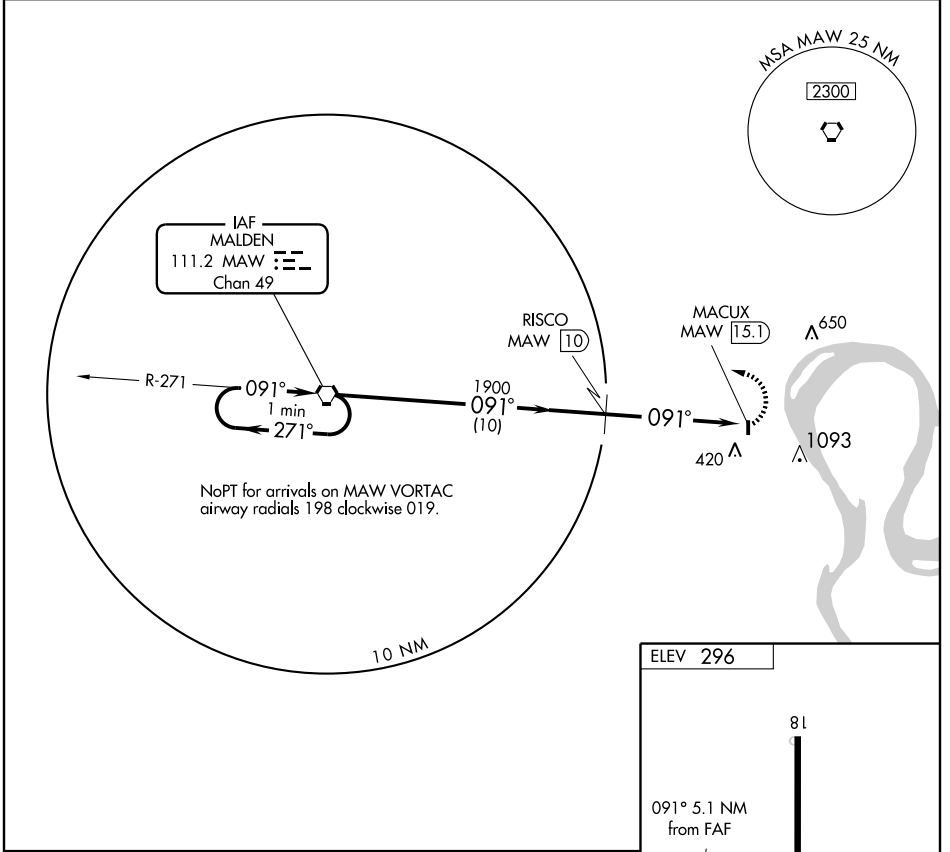
# VOR/DME-A

NEW MADRID/COUNTY MEMORIAL (EIW)

**⚠** Circling to Rwy 36 NA at night. Use Dyersburg altimeter setting; when not received use Cairo altimeter setting and increase all MDA 20 feet.

**⚠** NA MISSED APPROACH: Climbing left turn to 2300 direct MAW VORTAC and hold.

DYERSBURG AWOS-3 <b>135.625</b>	MEMPHIS CENTER <b>133.65 292.15</b>	UNICOM <b>122.8 (CTAF) 0</b>
------------------------------------	--	---------------------------------



CATEGORY	A	B	C	D
CIRCLING	1200-1¼	904 (1000-1¼)	NA	

NEW MADRID, MISSOURI  
Amdt 4 09239

36°32'N-89°36'W

NEW MADRID/COUNTY MEMORIAL (EIW)  
**VOR/DME-A**

NC-3, 22 OCT 2009 to 19 NOV 2009

NC-3, 22 OCT 2009 to 19 NOV 2009