

INDIANAPOLIS, INDIANA

AL-5902 (FAA)

VORTAC SHB	APP CRS	Rwy Idg	3850
112.0	330°	TDZE	811
Chan 57		Apt Elev	811

VOR RWY 33

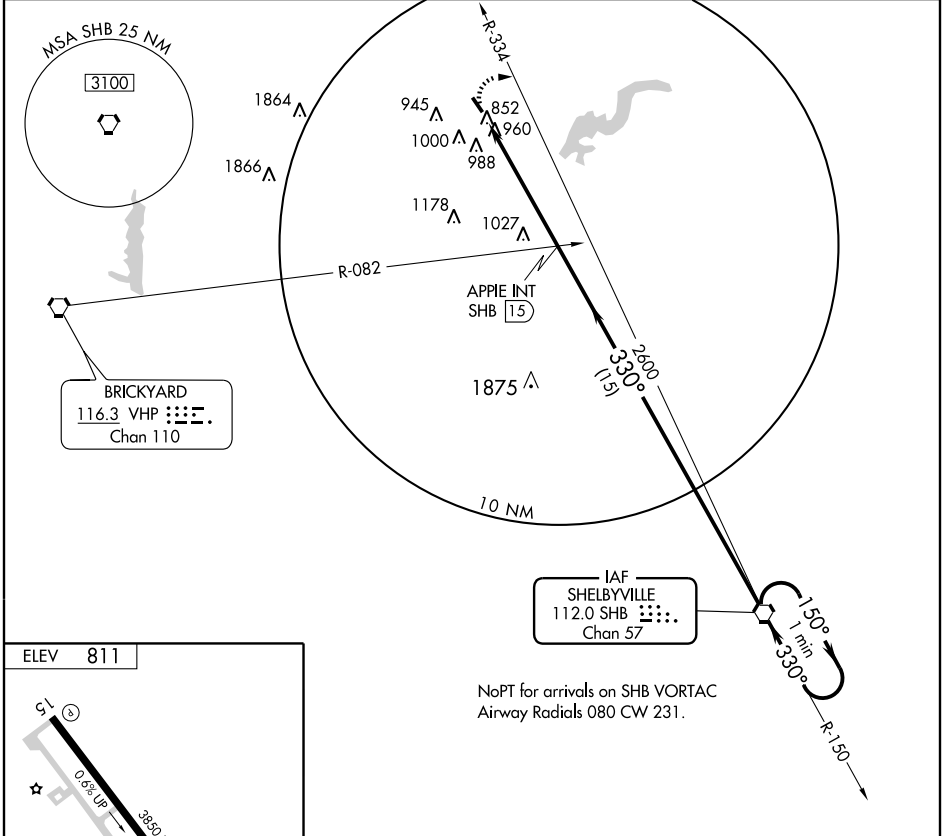
INDIANAPOLIS METROPOLITAN (UMP)

▽ If local altimeter setting not received, use Indianapolis Intl altimeter setting and increase all MDA's 60 feet.

▲ NA

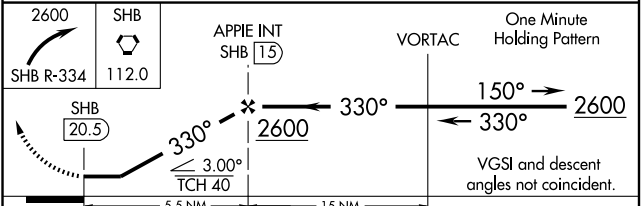
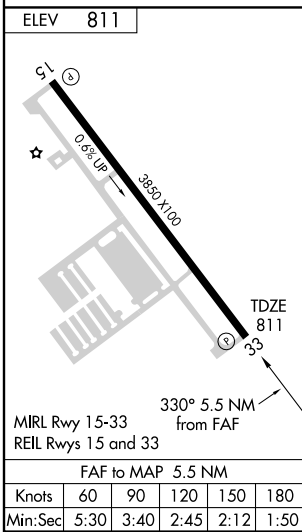
MISSED APPROACH: Climbing right turn to 2600 via SHB R-334 to SHB VORTAC and hold.

AWOS-3 338	INDIANAPOLIS APP CON 127.15 317.8	CINC DEL 121.625	UNICOM 123.0 (CTAF)
----------------------	---	----------------------------	-------------------------------



EC-2, 22 OCT 2009 to 19 NOV 2009

EC-2, 22 OCT 2009 to 19 NOV 2009



CATEGORY	A	B	C	D
S-33	1340-1 529 (600-1)	1340-1¼ 529 (600-1¼)	1340-1½ 529 (600-1½)	NA
CIRCLING	1340-1 529 (600-1)	1340-1¼ 529 (600-1¼)	1340-1½ 529 (600-1½)	NA

INDIANAPOLIS, INDIANA
Amdt 9 09015

39°56'N - 86°03'W

INDIANAPOLIS METROPOLITAN (UMP) VOR RWY 33