

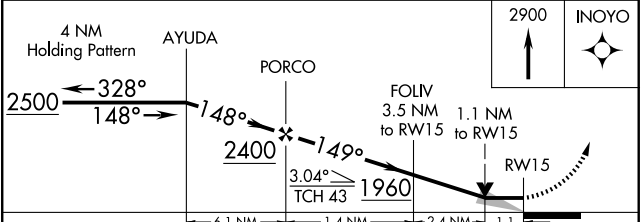
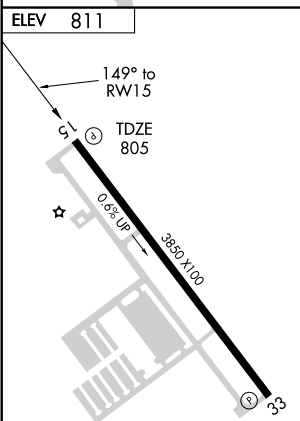
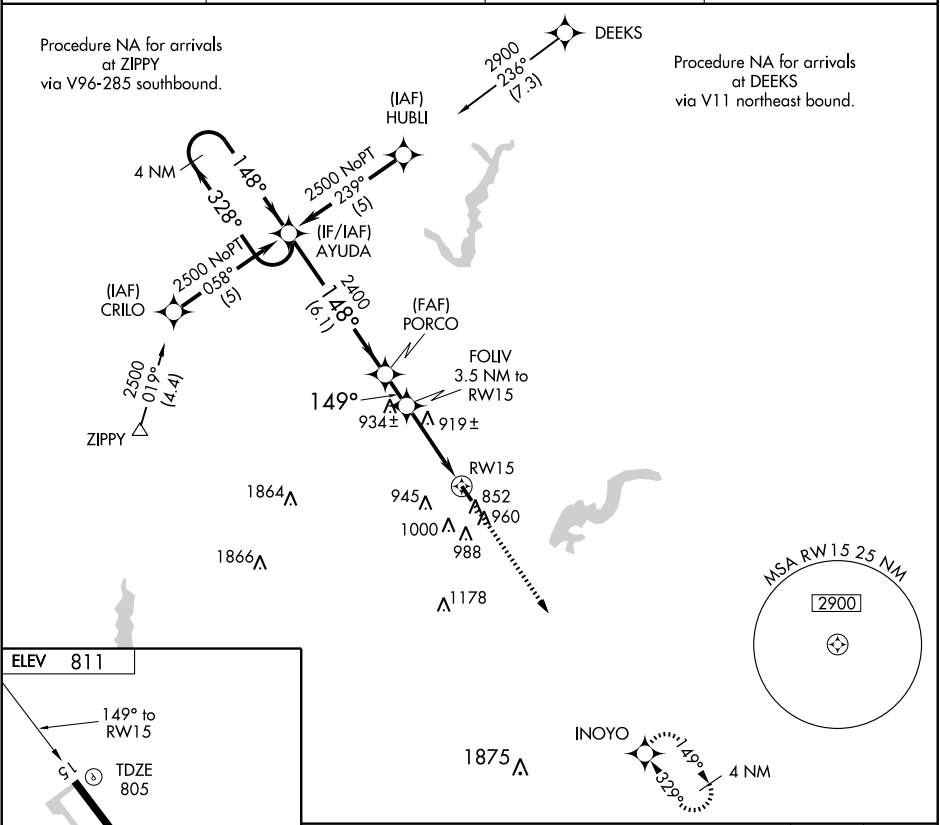
RNAV (GPS) RWY 15
INDIANAPOLIS METROPOLITAN (UMP)

APP CRS	Rwy ldg	3850
149°	TDZE	805
	Apt Elev	811

NA DME/DME RNP-0.3 NA. VDP NA when using Indianapolis Intl altimeter setting. When local altimeter setting is not received, use Indianapolis Intl altimeter setting and increase all MDA 60 feet and LNAV Cat C visibility ¼ mile.

MISSED APPROACH: Climb to 2900 direct INOYO and hold.

AWOS-3 338	INDIANAPOLIS APP CON 127.15 317.8	CLNC DEL 121.625	UNICOM 123.0 (CTAF)
----------------------	---	----------------------------	-------------------------------



CATEGORY	A	B	C	D
LNAV MDA	1180-1 375 (400-1)			NA
CIRCLING	1320-1 509 (600-1)	1340-1 529 (600-1)	1340-1½ 529 (600-1½)	NA

MIRL Rwy 15-33
REIL Rwy 15 and 33
INDIANAPOLIS, INDIANA
Amdt 1 09015

39°56'N - 86°03'W

INDIANAPOLIS METROPOLITAN (UMP)
RNAV (GPS) RWY 15

EC-2, 22 OCT 2009 to 19 NOV 2009

EC-2, 22 OCT 2009 to 19 NOV 2009