

VOR/DME BUU 114.5 Chan 92	APP CRS 282°	Rwy ldg 4300 TDZE 779 Apt Elev 779
---	------------------------	---

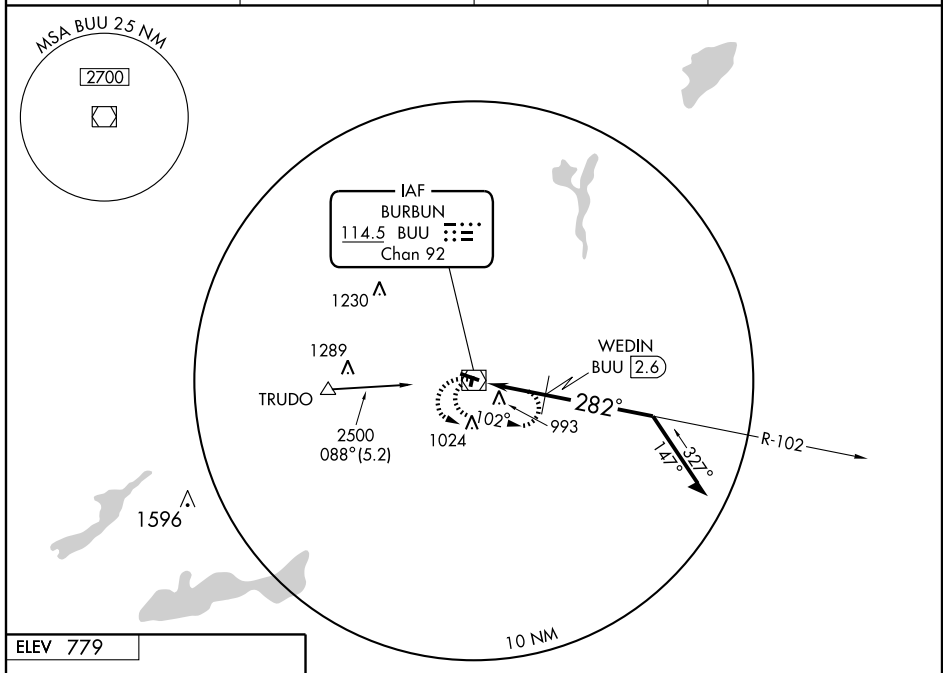
VOR RWY 29

BURLINGTON MUNI (BUU)

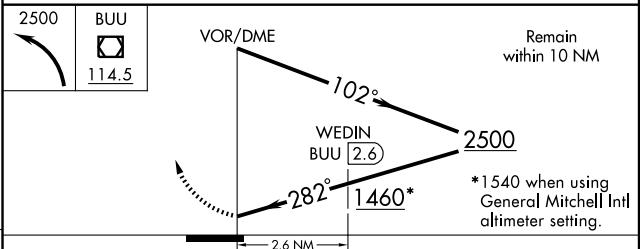
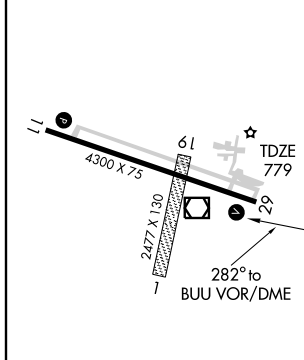
When local altimeter setting not received, use General Mitchell Intl altimeter setting and increase all MDAs 80 feet and increase S-29 and Circling Cats. B, C and D visibilities ¼ mile, and WEDIN Fix minimums S-29 and Circling Cats. C and D visibilities ¼ mile. Visibility reduction by helicopters NA.

MISSED APPROACH: Climbing left turn to 2500 in BUU VOR/DME holding pattern.

AWOS-3 114.50	MILWAUKEE APP CON 125.35 307.0	GCO 121.725	UNICOM 123.05 (CTAF) 1
-------------------------	--	-----------------------	----------------------------------



ELEV 779



CATEGORY	A	B	C	D
S-29	1460-1	681 (700-1)	1460-2 681 (700-2)	1460-2¼ 681 (700-2¼)
CIRCLING	1460-1	681 (700-1)	1460-2 681 (700-2)	1460-2¼ 681 (700-2¼)
WEDIN FIX MINIMUMS				
S-29	1300-1	521 (600-1)	1300-1½ 521 (600-1½)	1300-1¾ 521 (600-1¾)
CIRCLING	1340-1 561 (600-1)	1360-1 581 (600-1)	1360-1½ 581 (600-1½)	1380-2 601 (700-2)

MIRL Rwy 11-29 1	REIL Rws 11 and 29 1				
Knots	60	90	120	150	180
Min:Sec					

EC-3, 22 OCT 2009 to 19 NOV 2009

EC-3, 22 OCT 2009 to 19 NOV 2009