

CANTON, ILLINOIS

AL-5900 (FAA)

VOR-A

CANTON/INGERSOLL (CTK)

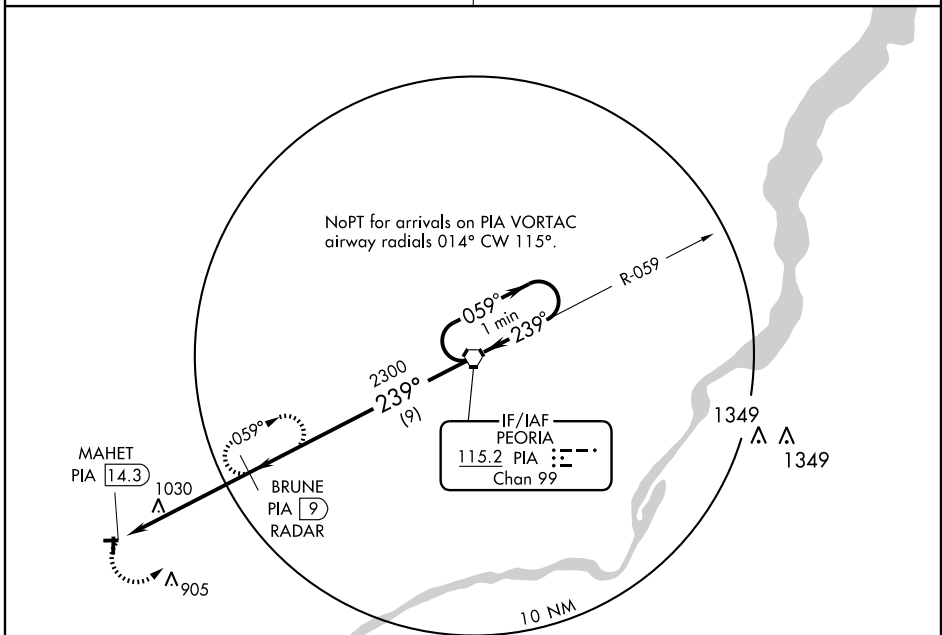
VORTAC PIA 115.2 Chan 99	APP CRS 239°	Rwy Idg TDZE Apt Elev N/A N/A 684
--	------------------------	---

When local altimeter setting not received, use Greater Peoria Rgnl altimeter setting and increase all MDA 60 feet and Circling Cat. C visibility ¼ mile. DME or RADAR required.

MISSED APPROACH: Climbing left turn to 2300 via heading 046° and PIA R-239 to BRUNE/PIA 9 DME and hold.

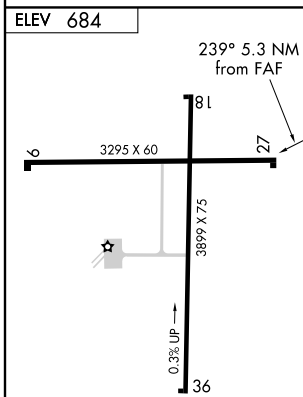
PEORIA APP CON
124.675 269.2

UNICOM
122.8 (CTAF) 0



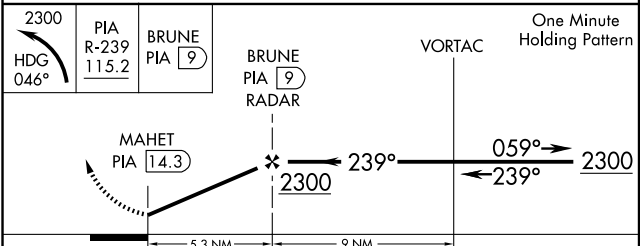
EC-3, 22 OCT 2009 to 19 NOV 2009

EC-3, 22 OCT 2009 to 19 NOV 2009



REIL Rwy 36 0
MIRL Rwys 9-27 and 18-36 0

	FAF to MAP 5.3 NM				
Knots	60	90	120	150	180
Min:Sec	5:18	3:32	2:39	2:07	1:46



CATEGORY	A	B	C	D
CIRCLING	1340-1	656 (700-1)	1340-1¾ 656 (700-1¾)	NA

CANTON, ILLINOIS
Amdt 8 08213

40°34'N - 90°04'W

CANTON/INGERSOLL (CTK)
VOR-A