

CANTON, ILLINOIS

AL-5900 (FAA)

RNAV (GPS) RWY 36

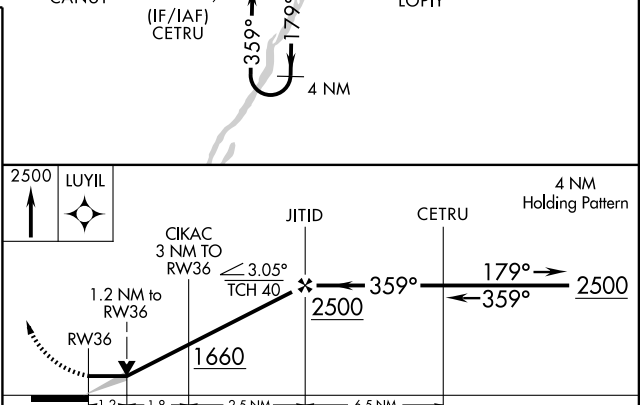
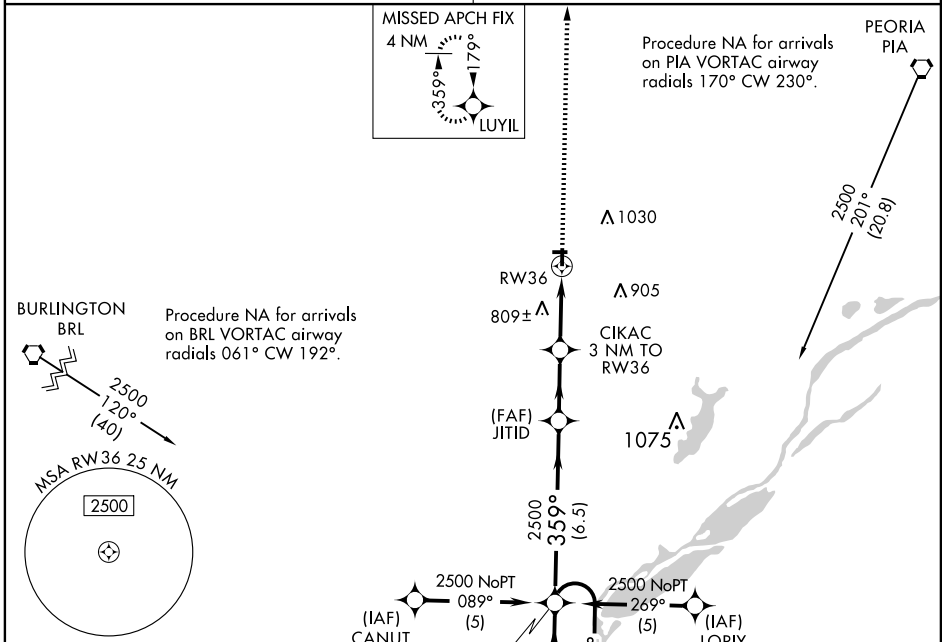
CANTON/INGERSOLL (CTK)

APP CRS 359°	Rwy Idg 3899
	TDZE 682
	Apt Elev 684

NA When local altimeter setting not received, use Greater Peoria Rgnl altimeter setting and increase all MDA 60 feet. DME/DME RNP-0.3 NA.
NA VDP NA when using Greater Peoria Rgnl altimeter setting.

MISSED APPROACH: Climb to 2500 direct LUYIL and hold.

PEORIA APP CON 124.675 269.2	UNICOM 122.8 (CTAF)
--	-------------------------------



CATEGORY	A	B	C	D
LNAV MDA	1100-1	418 (500-1)	1100-1¼ 418 (500-1¼)	NA
CIRCLING	1140-1	456 (500-1)	1140-1½ 456 (500-1½)	NA

CANTON, ILLINOIS
 Orig 08213

40°34'N - 90°04'W

RNAV (GPS) RWY 36

CANTON/INGERSOLL (CTK)

EC-3, 22 OCT 2009 to 19 NOV 2009

EC-3, 22 OCT 2009 to 19 NOV 2009