

RNAV (GPS) RWY 18

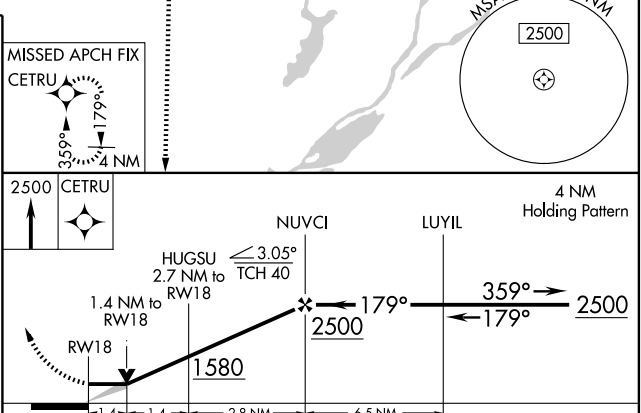
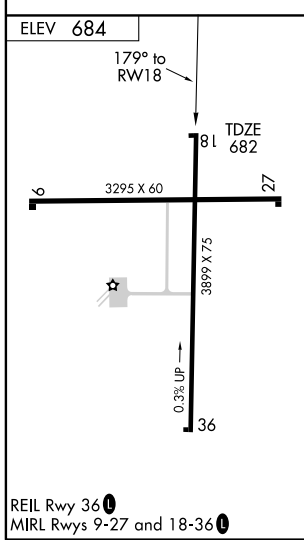
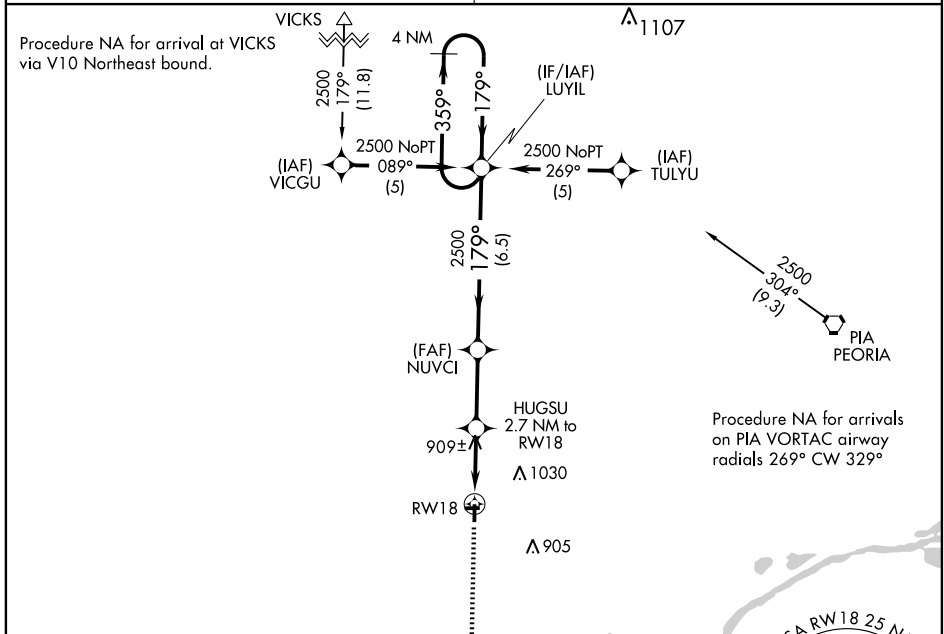
CANTON/INGERSOLL (CTK)

APP CRS 179°	Rwy Idg 3899
	TDZE 682
	Apt Elev 684

NA When local altimeter setting not received, use Greater Peoria Rgnl altimeter setting and increase all MDA 60 feet. DME/DME RNP-0.3 NA.
NA VDP NA when using Greater Peoria Rgnl altimeter setting.

MISSED APPROACH: Climb to 2500 direct CETRU and hold.

PEORIA APP CON 124.675 269.2	UNICOM 122.8 (CTAF) 0
--	---------------------------------



CATEGORY	A	B	C	D
LNAV MDA	1160-1	478 (500-1)	1160-1¼ 478 (500-1¼)	NA
CIRCLING	1160-1	476 (500-1)	1160-1½ 476 (500-1½)	NA

EC-3, 22 OCT 2009 to 19 NOV 2009

EC-3, 22 OCT 2009 to 19 NOV 2009