

CANTON, ILLINOIS

AL-5900 (FAA)

NDB RWY 36

CANTON/INGERSOLL (CTK)

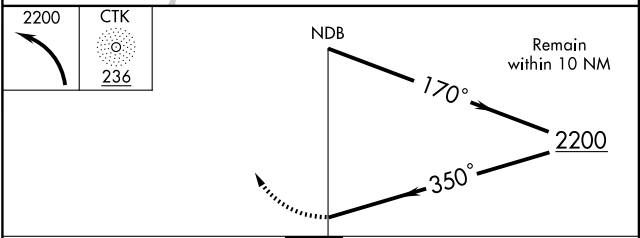
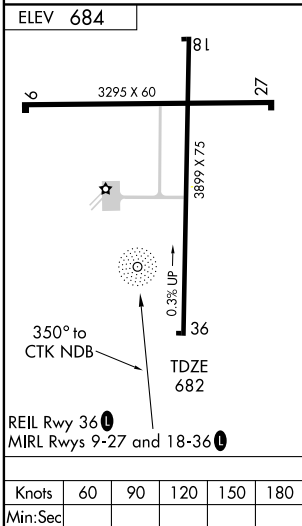
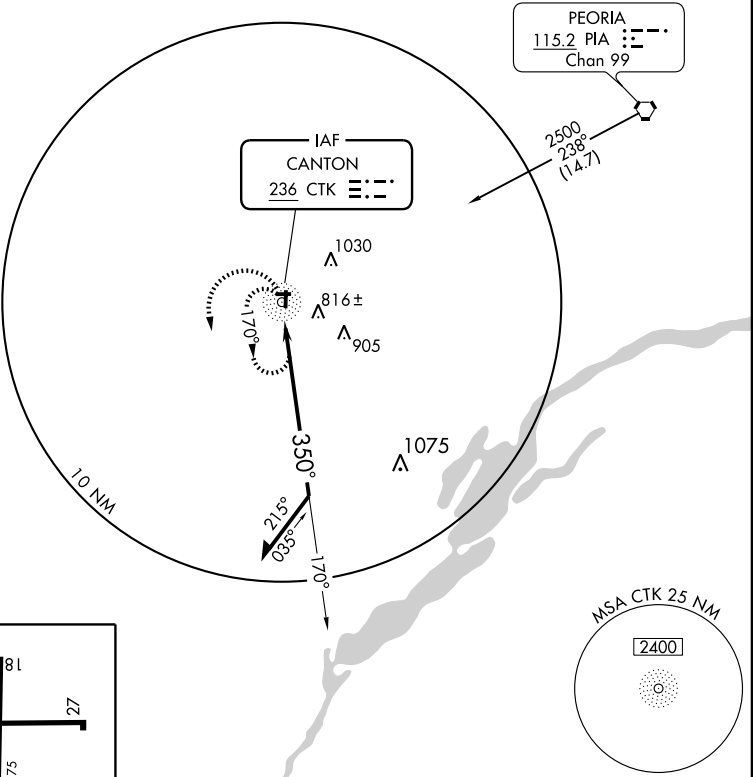
NDB CTK 236	APP CRS 350°	Rwy Idg TDZE Apt Elev	3899 682 684
-----------------------	------------------------	-----------------------------	---

NA When local altimeter setting not received, use Greater Peoria altimeter setting.

MISSED APPROACH: Climbing left turn to 2200 in CTK NDB holding pattern.

PEORIA APP CON
124.675 269.2

UNICOM
122.8 (CTAF) 0



CATEGORY	A	B	C	D
S-36	1240-1	558 (600-1)	1240-1½ 558 (600-1½)	NA
CIRCLING	1240-1	558 (600-1)	1420-2 738 (800-2)	NA

CANTON, ILLINOIS
Amdt 2B 08241

40°34'N - 90°04'W

CANTON/INGERSOLL (CTK)

NDB RWY 36

EC-3, 22 OCT 2009 to 19 NOV 2009

EC-3, 22 OCT 2009 to 19 NOV 2009