

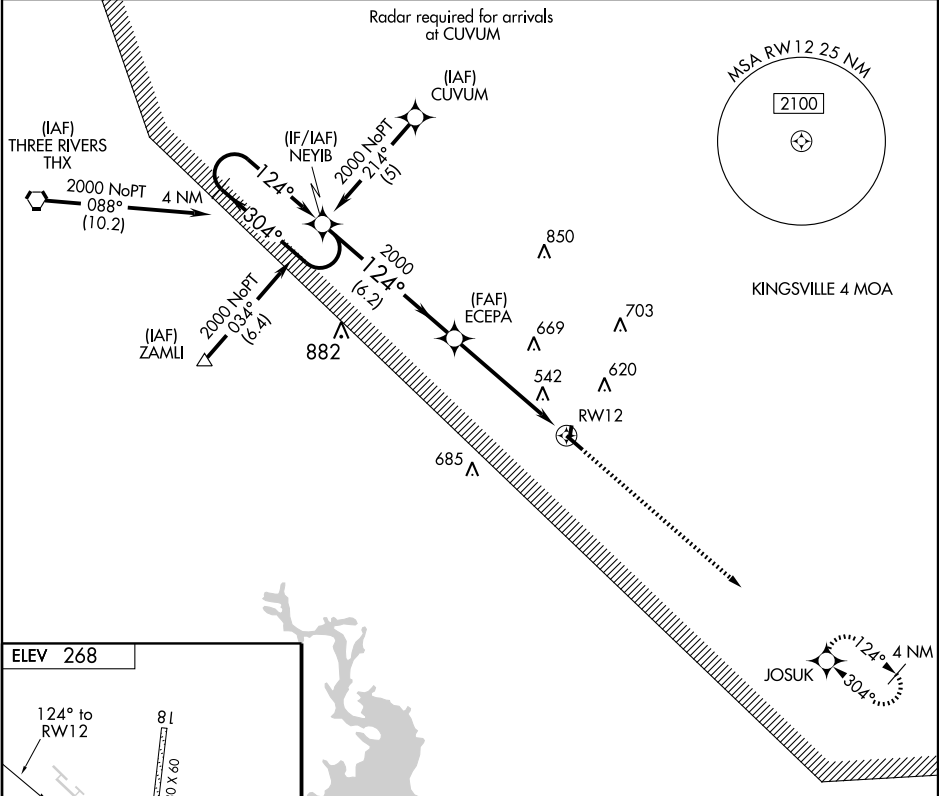
RNAV (GPS) RWY 12

BEEVILLE MUNI (B.E.A)

APP CRS 124°	Rwy Idg 4551
	TDZE 268
	Apt Elev 268

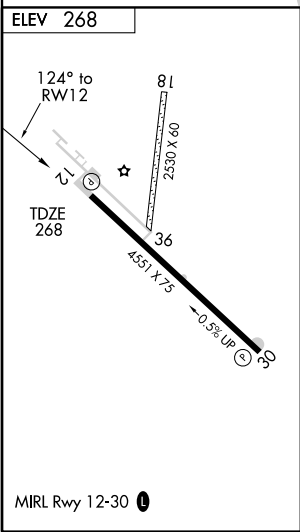
<p>▽ Use Corpus Christi Intl altimeter setting.</p> <p>▲ NA DME/DME RNP-0.3 NA.</p>	<p>MISSED APPROACH: Climb to 2000 direct JOSUK and hold.</p>
---	--

<p>AWOS-3 118.675</p>	<p>HOUSTON CENTER 134.6 322.5</p>	<p>UNICOM 122.8 0 (CTAF)</p>
----------------------------------	--	---



SC-3, 22 OCT 2009 to 19 NOV 2009

SC-3, 22 OCT 2009 to 19 NOV 2009



4 NM Holding Pattern				2000	JOSUK
<p>← 304°</p> <p>2000</p> <p>124° →</p>		<p>← 124°</p> <p>2000</p>		<p>3.05°</p> <p>TCH 40</p>	
		6.2 NM		5.2 NM	
CATEGORY	A	B	C	D	
LNAV MDA	1000-1	732 (800-1)	1000-2	732 (800-2)	
CIRCLING	1000-1	1020-1¼	1120-2½	852 (900-2½)	
	732 (800-1)	752 (800-1¼)		NA	