

VOR RWY 35

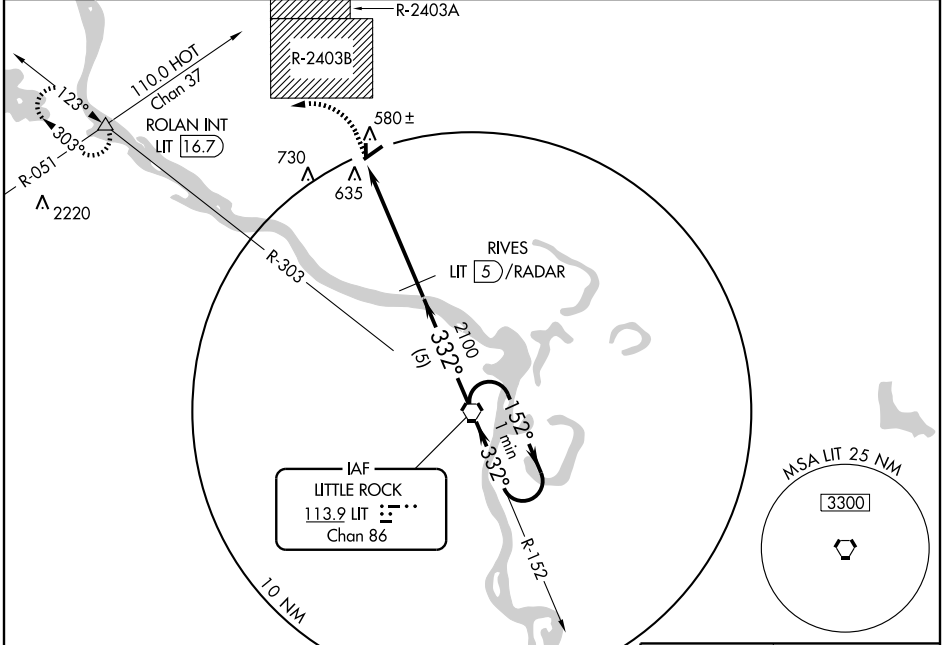
NORTH LITTLE ROCK MUNI (OR.K)

VORTAC LIT 113.9 Chan 86	APP CRS 332°	Rwy Idg TDZE Apt Elev	3009 545 545
--	------------------------	-----------------------------	---

▼ Use Little Rock/Adams Field altimeter setting.
▲ NA Procedure not authorized when restricted area R-2403B in effect.

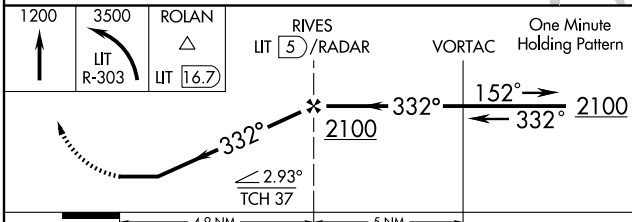
MISSED APPROACH: Climb to 1200 then climbing left turn to 3500 via LIT R-303 to ROLAN Int/LIT 16.7 DME and hold.

LITTLE ROCK APP CON 119.5 306.2	CLNC DEL 121.6	UNICOM 122.8 (CTAF) 0
---	--------------------------	---------------------------------

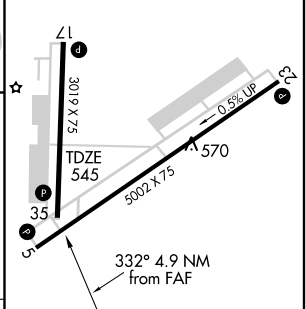


NoPT for arrival on LIT VORTAC
 airway radials R-089 CW R-230.

DME or RADAR REQUIRED



ELEV 545
REIL Rwy 5, 17, and 23
MIRL Rwy 5-23 and 17-35



CATEGORY	A	B	C	D
S-35	940-1 395 (400-1)			NA
CIRCLING	1040-1	495 (500-1)	1040-1½ 495 (500-1½)	NA

FAF to MAP 4.9 NM					
Knots	60	90	120	150	180
Min:Sec	4:54	3:16	2:27	1:58	1:38

SC-1, 22 OCT 2009 to 19 NOV 2009

SC-1, 22 OCT 2009 to 19 NOV 2009