

RNAV (GPS) RWY 5

NORTH LITTLE ROCK MUNI (OR.K)

WAAS CH 58106 W05A	APP CRS 053°	Rwy Idg TDZE Apt Elev	5002 541 545
--	------------------------	-----------------------------	---

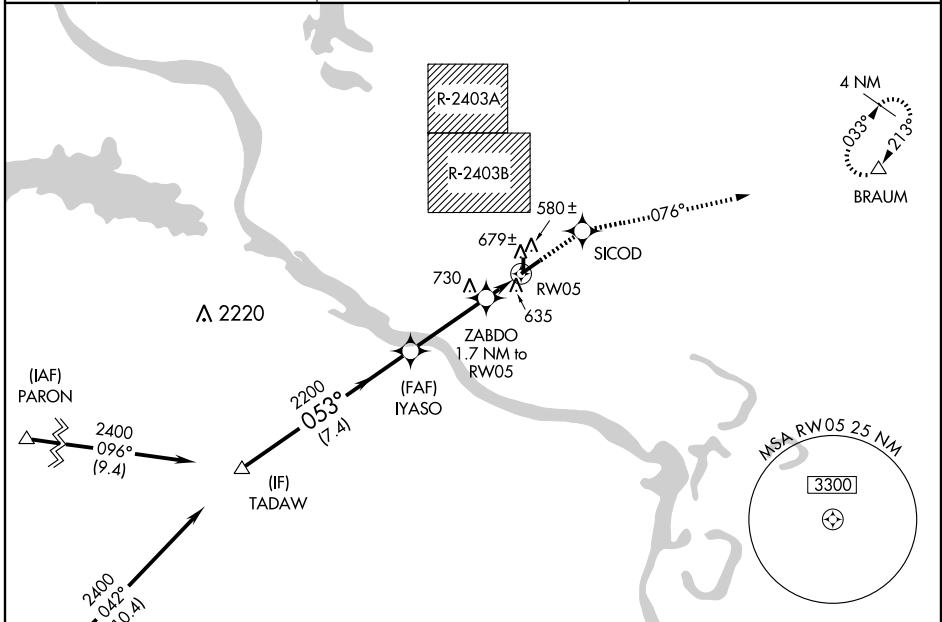
NA DME/DME RNP-0.3 NA. Use Little Rock/Adams Field alimeter setting, when not received procedure NA. Circling to Rwy 17 NA at night. Circling NA for Cats B and C north of Rwy 5-23 when restricted area R-2403B in use. BARO-VNAV NA. Visibility reduction by helicopters NA.

MISSED APPROACH: Climb to 2000 direct SICOD and via 076° track to BRAUM and hold.

LITTLE ROCK APP CON
119.5 306.2

CLNC DEL
121.6

UNICOM
122.8 (CTAF) 0

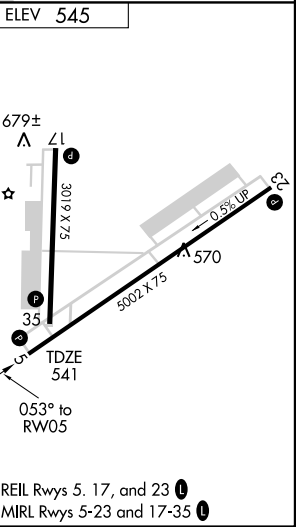
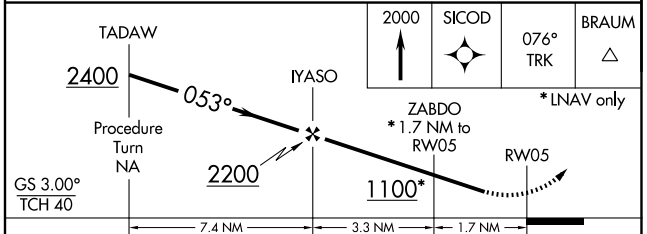


SC-1, 22 OCT 2009 to 19 NOV 2009

SC-1, 22 OCT 2009 to 19 NOV 2009

ELEV 545

Procedure NA for arrivals at BEGAN via V124-573 westbound.
Procedure NA for arrivals at PARON via V532 westbound.



CATEGORY	A	B	C	D
LPV DA	854-1	313 (400-1)		NA
LNAV/VNAV DA	986-1½	445 (500-1½)		NA
LNAV MDA	1000-1	459 (500-1)	1000-1¼ 459 (500-1¼)	NA
CIRCLING	1060-1	515 (600-1)	1060-1½ 515 (600-1½)	NA