

RNAV (GPS) RWY 35

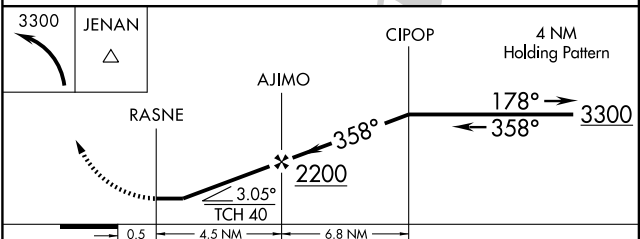
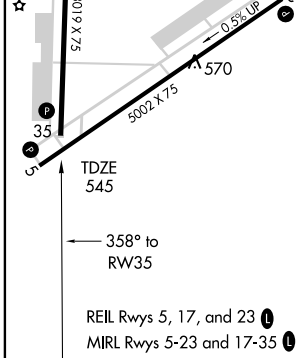
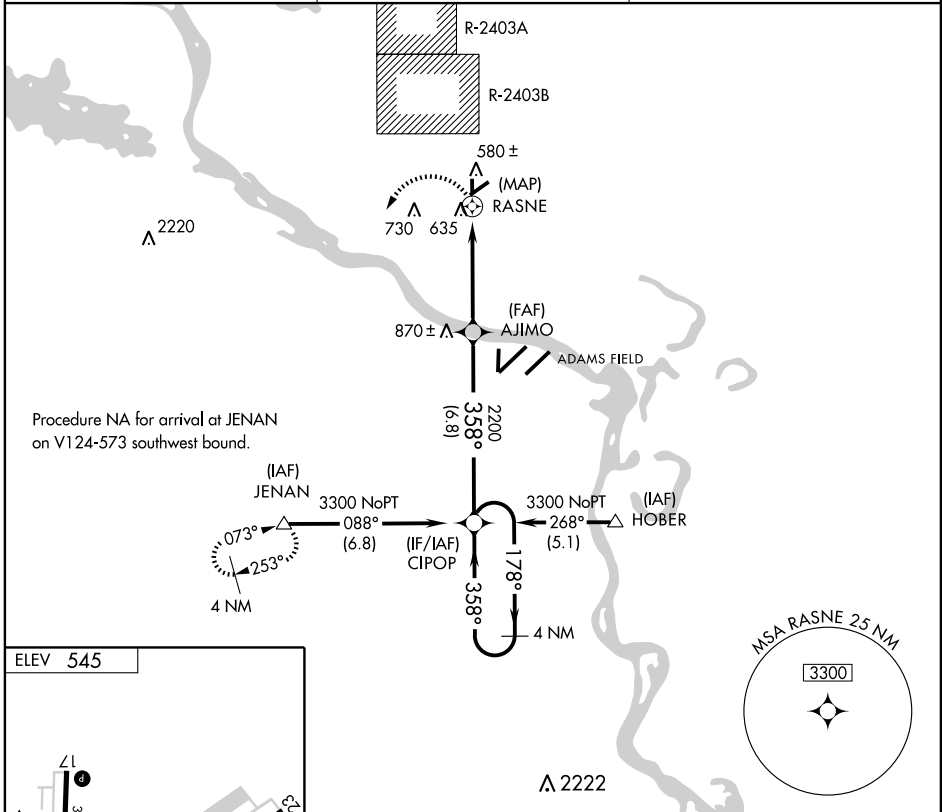
NORTH LITTLE ROCK MUNI (OR.K)

APP CRS 358°	Rwy Idg 3019 TDZE 545 Apt Elev 545
------------------------	---

▽ GPS or RNP-0.3 Required. DME/DME RNP-0.3 NA.
△ NA Circling Rwy 17 NA at night. Procedure not authorized when restricted area R-2403B is in use. Use Little Rock/Adams Field altimeter setting.

MISSED APPROACH: Climbing left turn to 3300 direct JENAN WP and hold.

LITTLE ROCK APP CON 119.5 306.2	CLNC DEL 121.6	UNICOM 122.8 (CTAF) 0
---	--------------------------	---------------------------------



CATEGORY	A	B	C	D
LNAV MDA	960-1	415 (500-1)	960-1¼ 415 (500-1¼)	NA
CIRCLING	1040-1	495 (500-1)	1040-1½ 495 (500-1½)	NA

SC-1, 22 OCT 2009 to 19 NOV 2009

SC-1, 22 OCT 2009 to 19 NOV 2009