

KENDALLVILLE, INDIANA

AL-5896 (FAA)

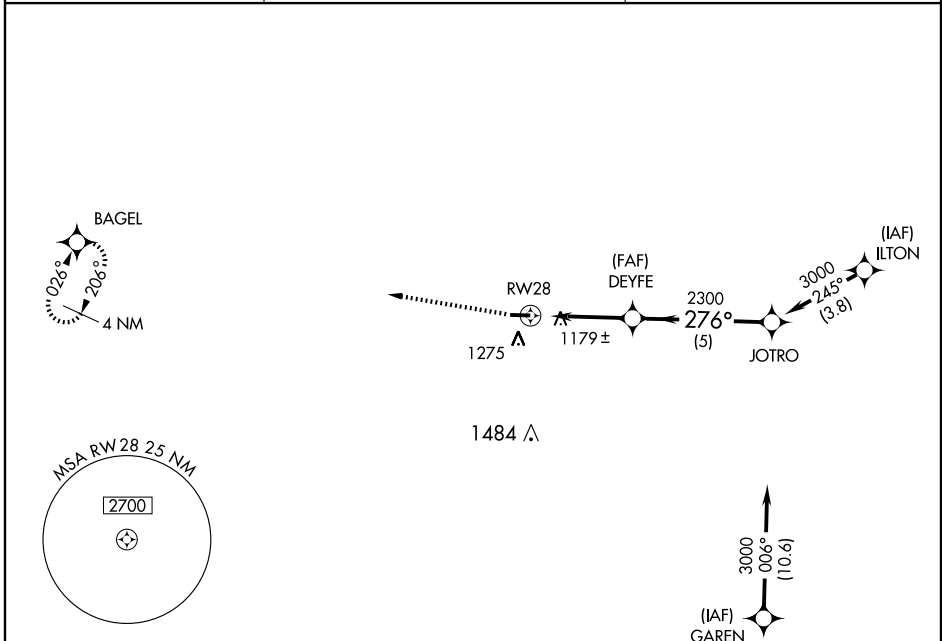
# GPS RWY 28

KENDALLVILLE MUNI (C62)

APP CRS <b>276°</b>	Rwy Idg <b>4400</b>
	TDZE <b>1005</b>
	Apt Elev <b>1005</b>

<p>▼ Obtain local altimeter setting on CTAF; when not received use Fort Wayne altimeter setting.</p> <p>▲ NA</p>	<p>MISSED APPROACH: Climb to 3000 direct BAGEL WP and hold.</p>
--	---

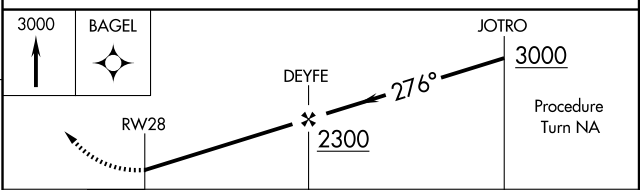
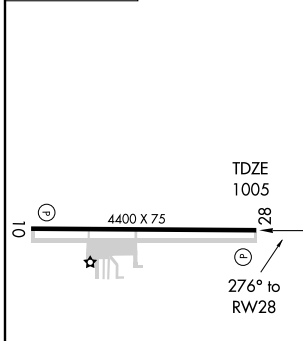
<p>AWOS-3 <b>119.925</b></p>	<p>FORT WAYNE APP CON <b>127.2 284.6</b></p>	<p>UNICOM <b>122.8 (CTAF)</b></p>
----------------------------------	--	---------------------------------------



EC-2, 22 OCT 2009 to 19 NOV 2009

EC-2, 22 OCT 2009 to 19 NOV 2009

ELEV 1005



CATEGORY	A	B	C	D
S-28	1480-1	475 (500-1)		NA
CIRCLING	1640-1	635 (700-1)		NA
FORT WAYNE ALTIMETER SETTING MINIMUMS				
S-28	1580-1	575 (600-1)		NA
CIRCLING	1720-1	715 (800-1)		NA

KENDALLVILLE, INDIANA  
Orig-A 05188

41°28'N - 85°16'W

# GPS RWY 28