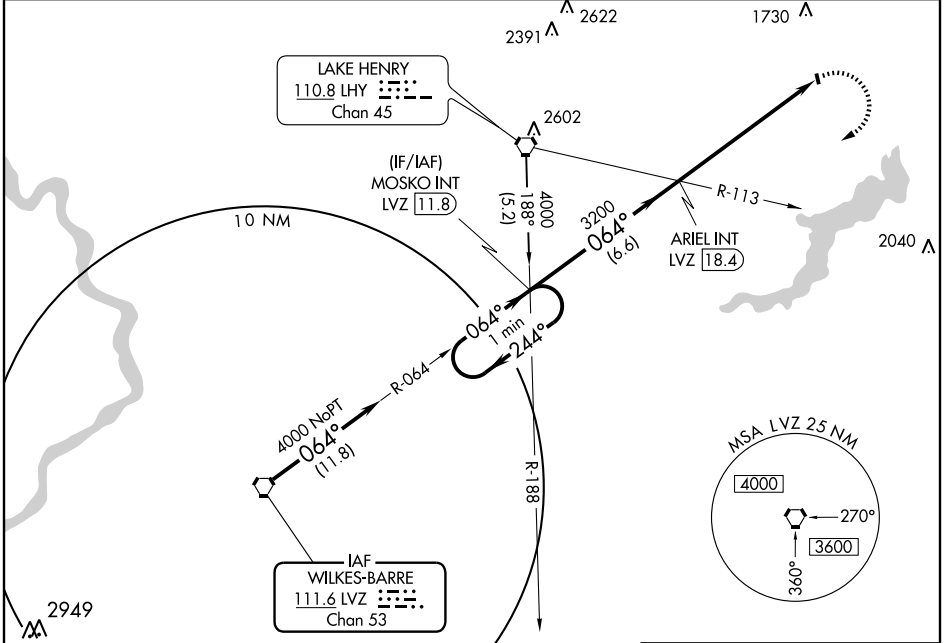


VORTAC LVZ 111.6 Chan 53	APP CRS 064°	Rwy Idg TDZE Apt Elev	N/A N/A 1357
--	------------------------	-----------------------------	---

Obtain local altimeter setting on CTAF; when not received, use Wilkes-Barre/Scranton altimeter setting.

MISSED APPROACH: Climbing right turn to 4000 via LVZ R-064 to MOSKO Int/LVZ 11.8 DME and hold.

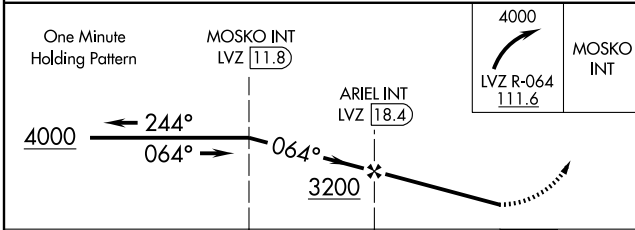
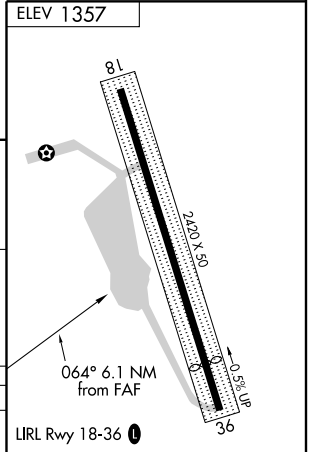
WILKES-BARRE APP CON 124.5 256.7	UNICOM 122.8 (CTAF)	122.75 0
--	-------------------------------	-----------------



NE-4, 22 OCT 2009 to 19 NOV 2009

NE-4, 22 OCT 2009 to 19 NOV 2009

ELEV 1357



CATEGORY	A	B	C	D
CIRCLING	2180-1 823 (900-1)	NA		
WILKES-BARRE/SCRANTON ALTIMETER SETTING MINIMUMS				
CIRCLING	2500-1¼ 1143 (1200-1¼)	NA		

FAF to MAP 6.1 NM					
Knots	60	90	120	150	180
Min:Sec	6:06	4:04	3:03	2:26	2:02