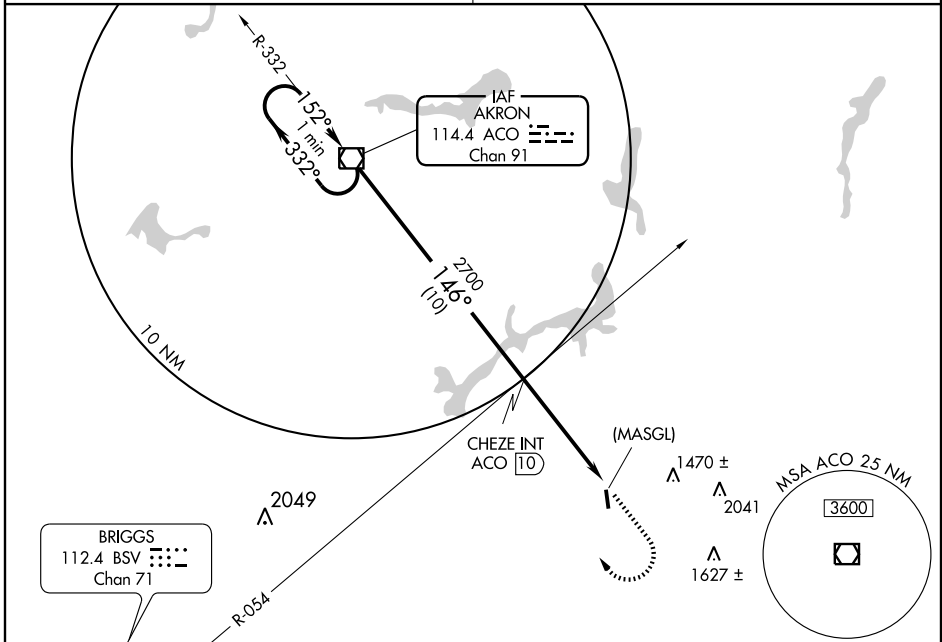


VOR/DME ACO 114.4 Chan 91	APP CRS 146°	Rwy Idg 2768 TDZE 1188 Apt Elev 1188
---	------------------------	---

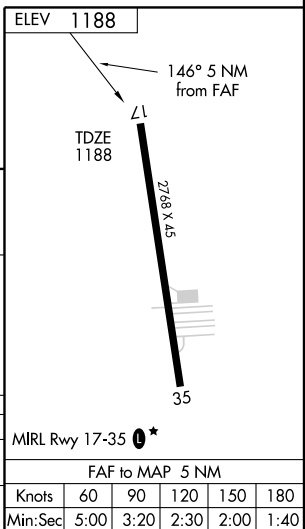
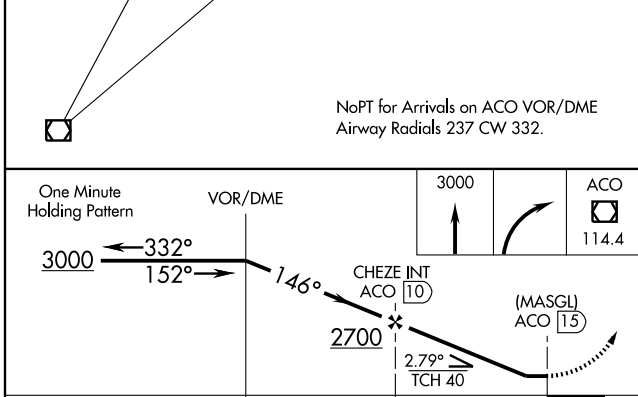
VOR or GPS RWY 17

SEBRING/ TRI-CITY (3G6)

<p>▼ Use Akron-Canton altimeter setting.</p> <p>▲ NA</p>	<p>MISSED APPROACH: Climb to 3000 then right turn direct ACO VOR/DME and hold.</p>
<p>AKRON-CANTON APP CON* 125.5 371.875</p>	<p>CTAF 122.9</p>



NoPT for Arrivals on ACO VOR/DME Airway Radials 237 CW 332.



CATEGORY	A	B	C	D
S-17	1640-1	452 (500-1)	1640-1½ 452 (500-1½)	NA
CIRCLING	1680-1 492 (500-1)	1700-1 512 (600-1)	1700-1½ 512 (600-1½)	NA

FAF to MAP 5 NM					
Knots	60	90	120	150	180
Min:Sec	5:00	3:20	2:30	2:00	1:40

EC-2, 22 OCT 2009 to 19 NOV 2009

EC-2, 22 OCT 2009 to 19 NOV 2009