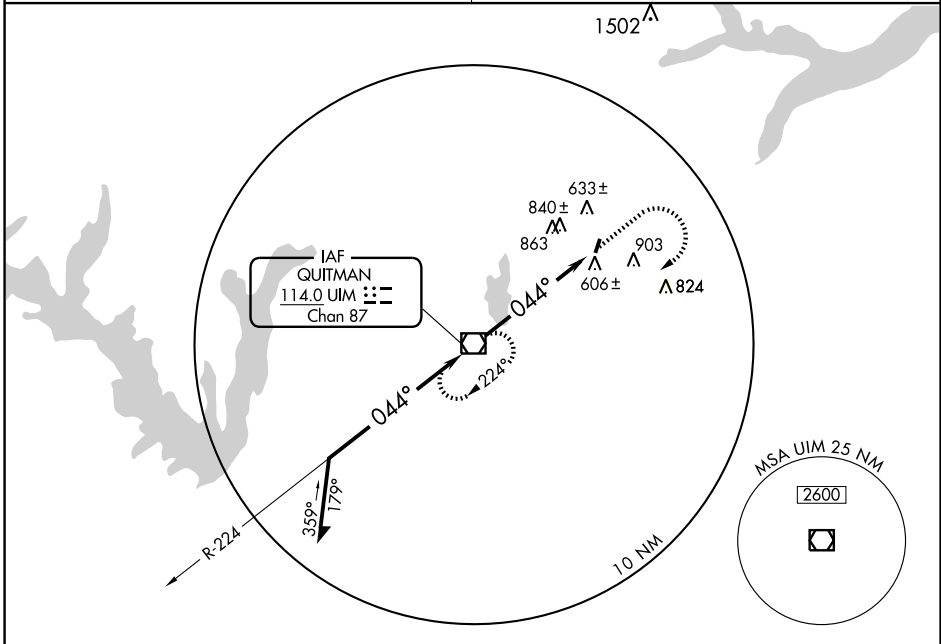


VOR/DME UIM 114.0 Chan 87	APP CRS 044°	Rwy Idg TDZE Apt Elev N/A N/A 513
---	------------------------	---

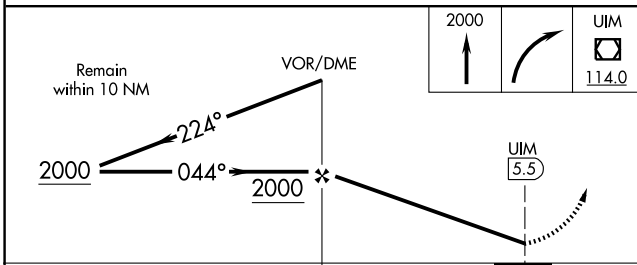
<p>▼ Use Tyler Pounds altimeter setting, if not received use Gregg County altimeter setting, when neither received procedure not authorized.</p> <p>▲ NA</p>	<p>MISSED APPROACH: Climb to 2000 then right turn direct UIM VOR/DME and hold.</p>
--	--

<p>LONGVIEW APP CON*</p> <p>128.75 379.15</p>	<p>CTAF</p> <p>122.9 0</p>
--	-----------------------------------



SC-2, 22 OCT 2009 to 19 NOV 2009

SC-2, 22 OCT 2009 to 19 NOV 2009



CATEGORY	A	B	C	D
CIRCLING	1360-1 847 (900-1)	1360-1¼ 847 (900-1¼)	1360-2½ 847 (900-2½)	NA
GREGG COUNTY ALTIMETER SETTING MINIMUMS				
CIRCLING	1400-1¼	887 (900-1¼)	1400-2¾ 887 (900-2¾)	NA

ELEV 513					
MIRL Rwy 1-19 0					
FAF to MAP 5.5 NM					
Knots	60	90	120	150	180
Min:Sec	5:30	3:40	2:45	2:12	1:50