

(SARDD1.LINDZ) 09127

SL-5889 (FAA)

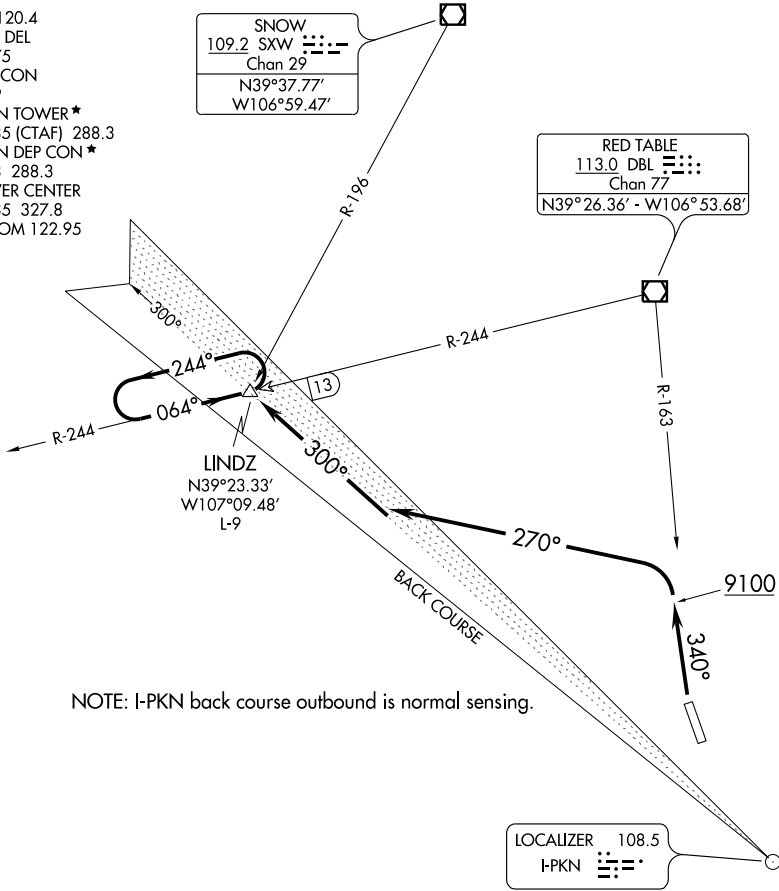
ASPEN-PITKIN COUNTY/SARDY FIELD (ASE)
ASPEN, COLORADO

SARDD ONE DEPARTURE (OBSTACLE)

ATIS 120.4
CLNC DEL
123.75
GND CON
121.9
ASPEN TOWER *
118.85 (CTAF) 288.3
ASPEN DEP CON *
123.8 288.3
DENVER CENTER
125.35 327.8
UNICOM 122.95

SNOW
109.2 SXW
Chan 29
N39°37.77'
W106°59.47'

RED TABLE
113.0 DBL
Chan 77
N39°26.36' - W106°53.68'



NOTE: I-PKN back course outbound is normal sensing.

TAKE-OFF MINIMUMS

RWY 33: 400-1 with minimum climb of 460' per NM to 14000 or 4300-3 for climb in visual conditions.
RWY 15: NA - terrain.

TAKE-OFF OBSTACLE NOTES

RWY 33: Multiple trees beginning 35' from DER, 386' right of centerline, up to 100' AGL/7722' MSL.
Multiple trees, bushes and terrain beginning 4' from DER, 400' left of centerline, 100' AGL/7821' MSL.
Multiple trees and bushes beginning 3484' from DER, 752' left of centerline, up to 100' AGL/8179' MSL.

NOTE: Chart not to scale.



DEPARTURE ROUTE DESCRIPTION

TAKE-OFF RUNWAY 33: Climb heading 340° to 9100, then a climbing left turn to 16000 heading 270°, to intercept I-PKN NW course outbound to LINDZ INT/DBL 13 DME. Climb in LINDZ holding pattern to cross LINDZ at or above 16000 before proceeding enroute, or for climb in visual conditions: cross Aspen Airport northbound at or above 11900 then via DBL R-163 to DBL VOR/DME.

SARDD ONE DEPARTURE (OBSTACLE)

ASPEN, COLORADO

ASPEN-PITKIN COUNTY/SARDY FIELD (ASE)

(SARDD1.LINDZ) 09127

SW-1, 22 OCT 2009 to 19 NOV 2009

SW-1, 22 OCT 2009 to 19 NOV 2009