

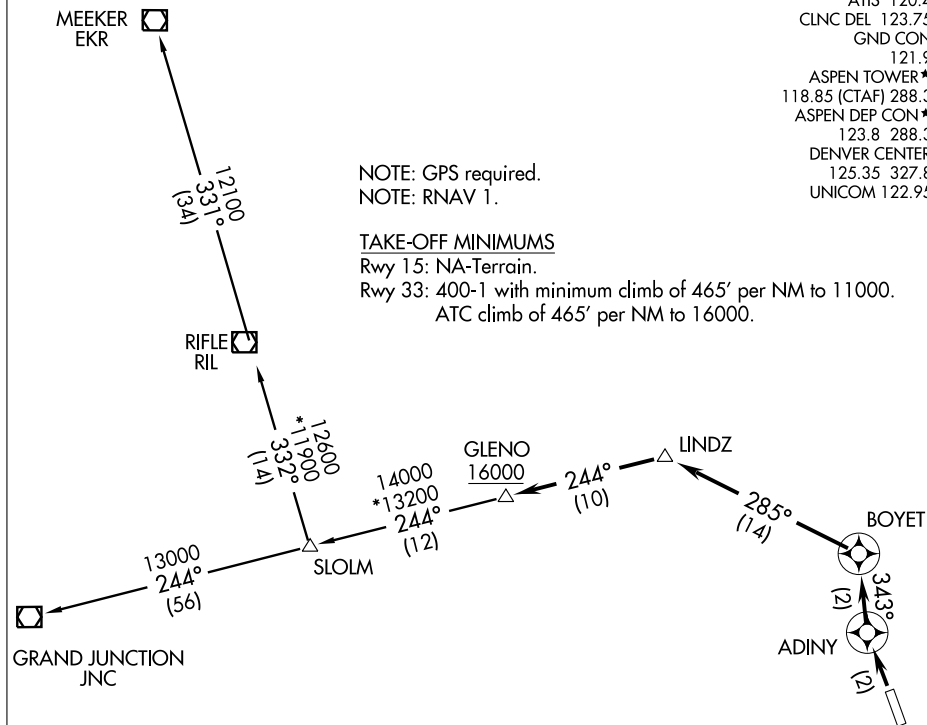
PITKN ONE DEPARTURE (RNAV)

ATIS 120.4
 CLNC DEL 123.75
 GND CON 121.9
 ASPEN TOWER* 118.85 (CTAF) 288.3
 ASPEN DEP CON* 123.8 288.3
 DENVER CENTER 125.35 327.8
 UNICOM 122.95

NOTE: GPS required.
 NOTE: RNAV 1.

TAKE-OFF MINIMUMS

Rwy 15: NA-Terrain.
 Rwy 33: 400-1 with minimum climb of 465' per NM to 11000.
 ATC climb of 465' per NM to 16000.



SW-1, 22 OCT 2009 to 19 NOV 2009

SW-1, 22 OCT 2009 to 19 NOV 2009

TAKE-OFF OBSTACLE NOTES

Rwy 33: Multiple trees beginning 35' from DER, 386' right of centerline, up to 100' AGL/7722' MSL.
 Multiple trees, bushes, and terrain beginning 4' from DER, 400' left of centerline, 100' AGL/7821' MSL.
 Multiple trees and bushes beginning 3484' from DER, 752' left of centerline, up to 100' AGL/8179' MSL.

NOTE: Chart not to scale.



DEPARTURE ROUTE DESCRIPTION

TAKE-OFF RUNWAY 33: Climb to 16000 direct ADINY, and via 343° track to BOYET, and via 285° track to LINDZ, and via 244° track to GLENO, thence. . . .

. . . .via transition or assigned route, expect clearance to filed altitude 10 minutes after departure.

GRAND JUNCTION TRANSITION (PITKN1.JNC)

MEEKER TRANSITION (PITKN1.EKR)

RIFLE TRANSITION (PITKN1.RIL)

PITKN ONE DEPARTURE (RNAV)