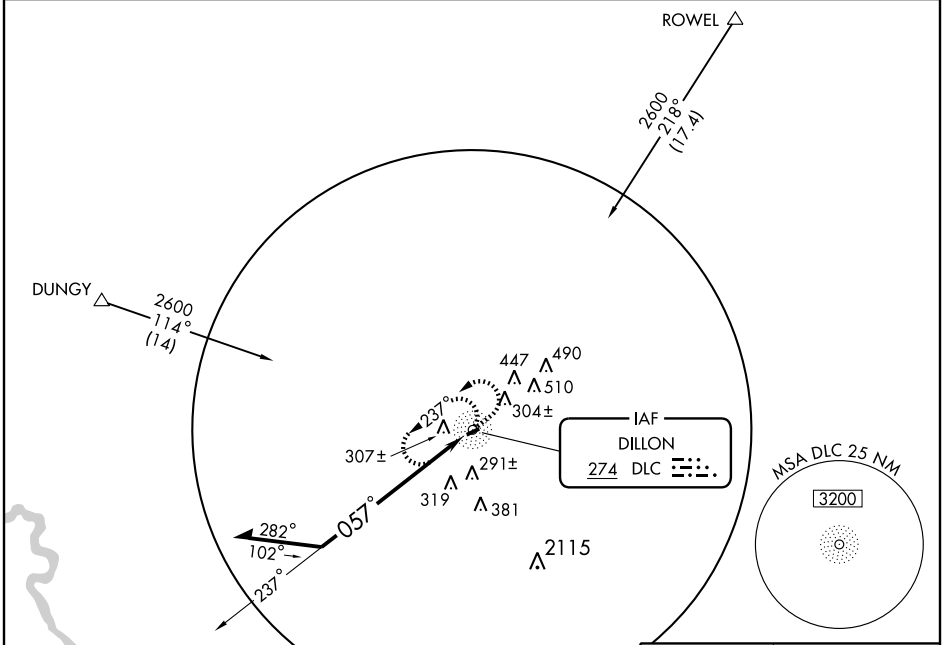


**NDB RWY 7**  
DILLON COUNTY (DLC)

NDB DLC <b>274</b>	APP CRS <b>057°</b>	Rwy Idg TDZE Apt Elev	<b>3000</b> <b>134</b> <b>134</b>
-----------------------	------------------------	-----------------------------	---

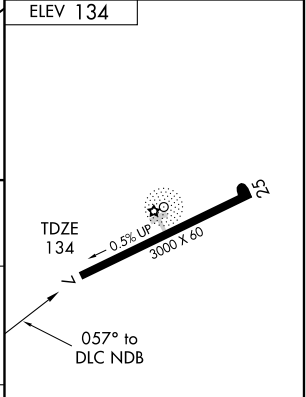
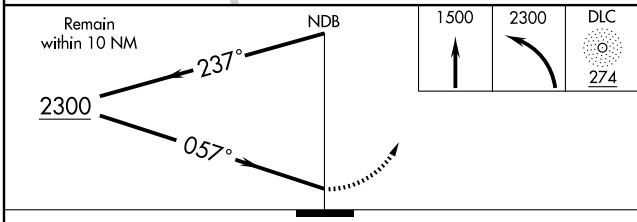
**NA** Use Florence altimeter setting. MISSED APPROACH: Climb to 1500 then climbing left turn to 2300 direct DLC NDB and hold.

FLORENCE APP CON ★ **118.6 341.7** UNICOM **122.8** (CTAF)



SE-2, 22 OCT 2009 to 19 NOV 2009

SE-2, 22 OCT 2009 to 19 NOV 2009



CATEGORY	A	B	C	D
S-7	840-1 706 (800-1)		840-2 706 (800-2)	NA
CIRCLING	840-1 706 (800-1)		840-2 706 (800-2)	NA

MIRL Rwy 7-25

Knots	60	90	120	150	180
Min:Sec					