

PELL CITY, ALABAMA

AL-5886 (FAA)

WAAS CH 78304 W20A	APP CRS 205°	Rwy Idg 5001 TDZE 485 Apt Elev 485
--	------------------------	---

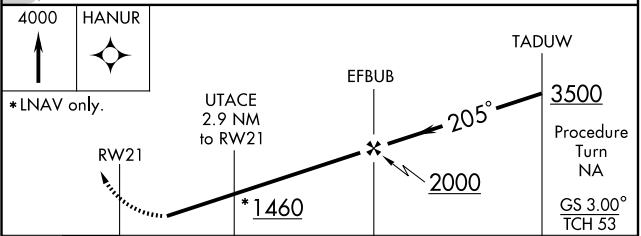
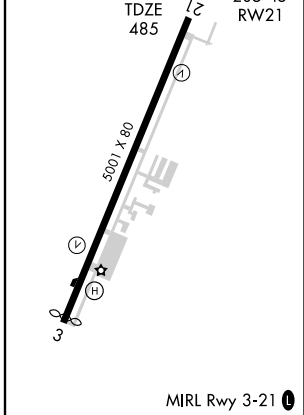
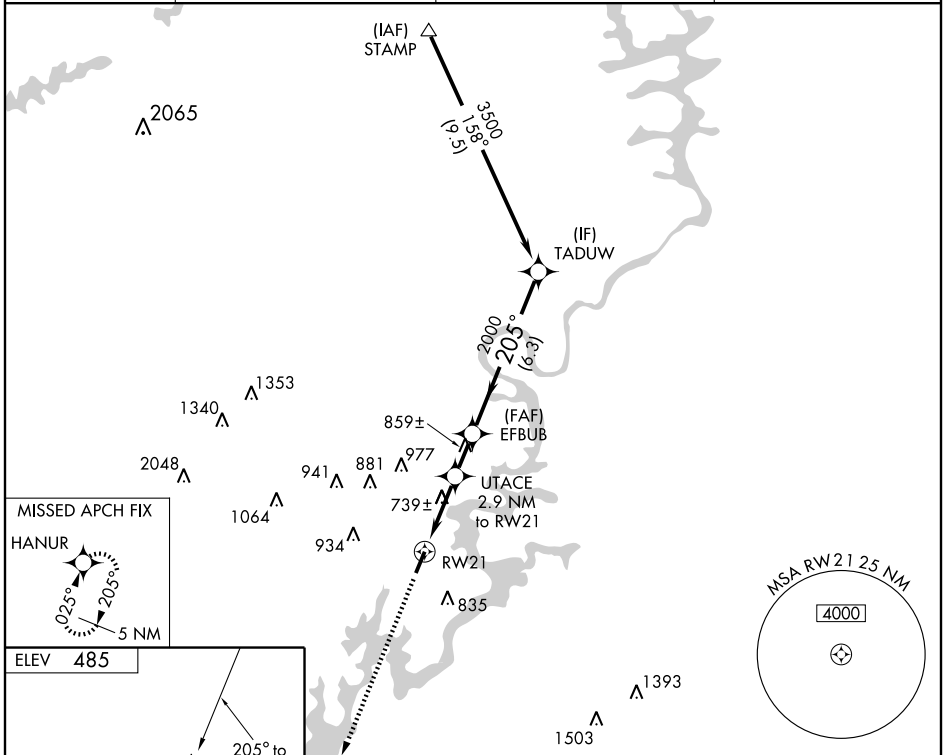
RNAV (GPS) RWY 21

PELL CITY/ST CLAIR COUNTY (PLR)

▼ Use Talladega altimeter setting; if not received, use Anniston altimeter setting and increase all DAs/MDAs 40 feet.
▲ NA DME/DME RNP-0.3 NA. Visibility reduction by helicopters NA.

MISSED APPROACH: Climb to 4000 direct HANUR and hold, continue climb-in-hold to 4000.

AWOS-3 119.625	TALLADEGA AWOS-3 118.425	BIRMINGHAM APP CON 123.8 381.5	UNICOM 123.05 (CTAF) 0
--------------------------	------------------------------------	--	---



CATEGORY	A	B	C	D
LPV DA	857-1¼ 372 (400-1¼)			
LNAV MDA	1020-1	535 (600-1)	1020-1½ 535 (600-1½)	1020-1¾ 535 (600-1¾)
CIRCLING	1220-1	735 (800-1)	1220-2 735 (800-2)	1220-2¼ 735 (800-2¼)

PELL CITY, ALABAMA
Amdt 1 09015

33°34'N - 86°15'W

PELL CITY/ST CLAIR COUNTY (PLR)

RNAV (GPS) RWY 21

SE-4, 22 OCT 2009 to 19 NOV 2009

SE-4, 22 OCT 2009 to 19 NOV 2009