

# RNAV (GPS) RWY 36

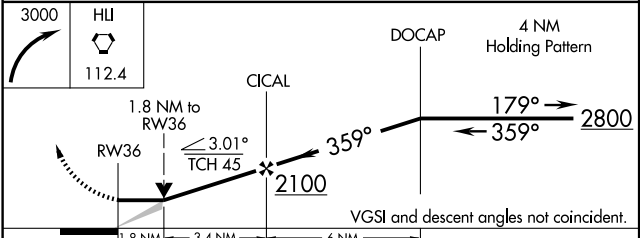
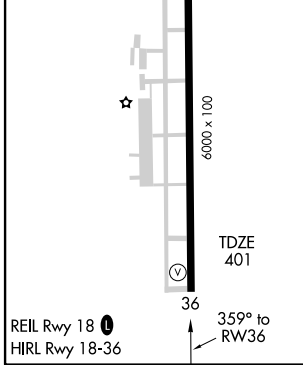
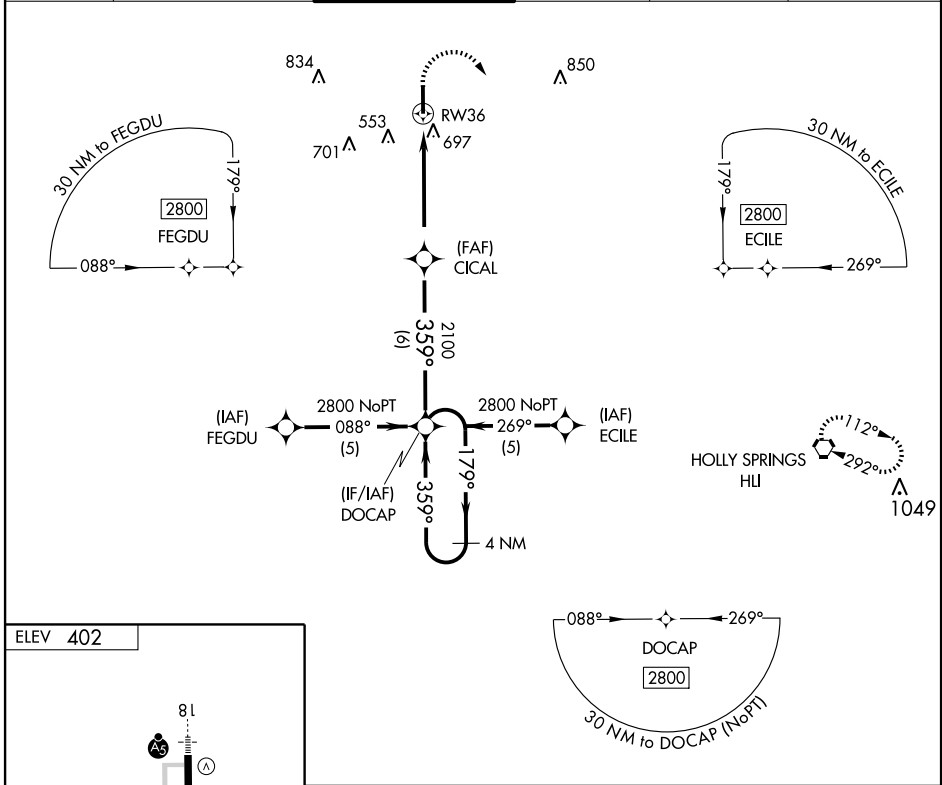
OLIVE BRANCH (OLV)

APP CRS	Rwy Idg	<b>6000</b>
<b>359°</b>	TDZE	<b>401</b>
	Apt Elev	<b>402</b>

**▽** If local altimeter setting not received, use Memphis Intl altimeter setting and increase all MDAs 40 feet.  
**▲ NA** GPS or RNP-0.3 required. DME/DME RNP-0.3 NA. VDP NA with Memphis Intl altimeter setting.

MISSED APPROACH: Climbing right turn to 3000 direct HLI VORTAC and hold.

ATIS	MEMPHIS APP CON	OLIVE BRANCH TOWER	GND CON	CLNC DEL	UNICOM
<b>119.925</b>	<b>121.0 125.8 338.3</b>	<b>125.275 (CTAF) 0</b>	<b>121.2</b>	<b>121.2</b>	<b>122.7</b>



CATEGORY	A	B	C	D
LNAV MDA	1000-1	599 (600-1)	1000-1½ 599 (600-1½)	1000-1¾ 599 (600-1¾)
CIRCLING	1060-1	658 (700-1)	1060-1¾ 658 (700-1¾)	1060-2 658 (700-2)

SC-4, 22 OCT 2009 to 19 NOV 2009

SC-4, 22 OCT 2009 to 19 NOV 2009